

ICAM3 Rabbit pAb

Catalog No.: A3923

Basic Information

Observed MW

140kDa

Calculated MW

60kDa

Category

Primary antibody

Applications

ELISA, WB

Cross-Reactivity

Human

Background

The protein encoded by this gene is a member of the intercellular adhesion molecule (ICAM) family. All ICAM proteins are type I transmembrane glycoproteins, contain 2-9 immunoglobulin-like C2-type domains, and bind to the leukocyte adhesion LFA-1 protein. This protein is constitutively and abundantly expressed by all leucocytes and may be the most important ligand for LFA-1 in the initiation of the immune response. It functions not only as an adhesion molecule, but also as a potent signalling molecule. Alternative splicing results in multiple transcript variants encoding different isoforms.

Recommended Dilutions

WB 1:500 - 1:1000

Immunogen Information

Gene ID

3385

Swiss Prot

P32942

Immunogen

Recombinant fusion protein containing a sequence corresponding to amino acids 270-490 of human ICAM3 (NP_002153.2).

Synonyms

CD50; CDW50; ICAM-R; ICAM3

Contact

☎ | 400-999-6126

✉ | cn.market@abclonal.com.cn

🌐 | www.abclonal.com.cn

Product Information

Source

Rabbit

Isotype

IgG

Purification

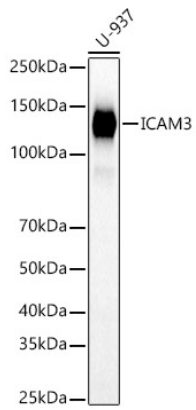
Affinity purification

Storage

Store at -20°C. Avoid freeze / thaw cycles.

Buffer: PBS with 0.02% sodium azide, 50% glycerol, pH 7.3.

Validation Data



Western blot analysis of U-937, using ICAM3 antibody (A3923) at 1:1000 dilution.
Secondary antibody: HRP Goat Anti-Rabbit IgG (H+L) (AS014) at 1:10000 dilution.
Lysates/proteins: 25µg per lane.
Blocking buffer: 3% nonfat dry milk in TBST.
Detection: ECL Basic Kit (RM00020).
Exposure time: 10s.