

IFIT3 Rabbit pAb

Catalog No.: A3924 **4 Publications**

Basic Information

Observed MW

60kDa

Calculated MW

56kDa

Category

Primary antibody

Applications

ELISA, WB, IHC-P

Cross-Reactivity

Human, Mouse, Rat

Background

Predicted to enable RNA binding activity and identical protein binding activity. Acts upstream of or within cellular response to interferon-beta; response to bacterium; and response to stilbenoid. Predicted to be located in mitochondrion. Predicted to be active in cytosol. Is expressed in alimentary system; eye; face; and nervous system. Orthologous to human IFIT3 (interferon induced protein with tetratricopeptide repeats 3).

Recommended Dilutions

WB	1:500 - 1:1000
IHC-P	1:100 - 1:200

Immunogen Information

Gene ID

15959

Swiss Prot

O14879

Immunogen

Recombinant fusion protein containing a sequence corresponding to amino acids 128-331 of mouse IFIT3 (NP_034631.1).

Synonyms

P49; Ifi49; IFIT3

Contact

 | 400-999-6126

 | cn.market@abclonal.com.cn

 | www.abclonal.com.cn

Product Information

Source

Rabbit

Isotype

IgG

Purification

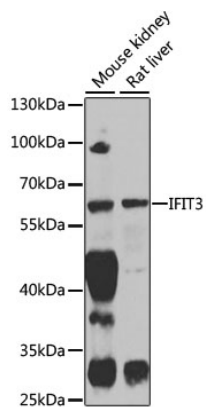
Affinity purification

Storage

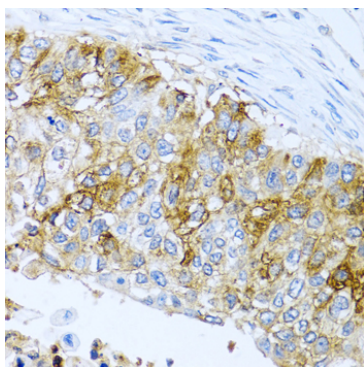
Store at -20°C. Avoid freeze / thaw cycles.

Buffer: PBS with 0.02% sodium azide, 50% glycerol, pH7.3.

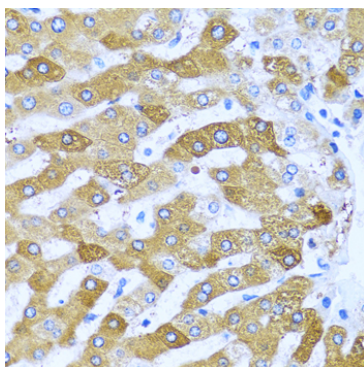
Validation Data



Western blot analysis of various lysates using IFIT3 Rabbit pAb (A3924) at 1:1000 dilution. Secondary antibody: HRP Goat Anti-Rabbit IgG (H+L) (AS014) at 1:10000 dilution. Lysates/proteins: 25µg per lane. Blocking buffer: 3% nonfat dry milk in TBST. Detection: ECL Enhanced Kit (RM00021). Exposure time: 60s.



Immunohistochemistry analysis of paraffin-embedded human lung cancer using IFIT3 Rabbit pAb (A3924) at dilution of 1:100 (40x lens). Perform microwave antigen retrieval with 10 mM PBS buffer pH 7.2 before commencing with IHC staining protocol.



Immunohistochemistry analysis of paraffin-embedded human liver using IFIT3 Rabbit pAb (A3924) at dilution of 1:100 (40x lens). Perform microwave antigen retrieval with 10 mM PBS buffer pH 7.2 before commencing with IHC staining protocol.