

# RAB4A Rabbit mAb

Catalog No.: A3979 **Recombinant**

## Basic Information

### Observed MW

25kDa

### Calculated MW

24kDa

### Category

Primary antibody

### Applications

ELISA, WB

### Cross-Reactivity

Human, Mouse

### CloneNo number

ARC2607

## Background

This gene is a member of the largest group in the Ras superfamily of small GTPases, which regulate membrane trafficking. The encoded protein is associated with early endosomes and is involved in their sorting and recycling. The protein also plays a role in regulating the recycling of receptors from endosomes to the plasma membrane. Alternatively spliced transcript variants have been observed for this gene.

## Recommended Dilutions

WB 1:500 - 1:1000

## Immunogen Information

### Gene ID

5867

### Swiss Prot

P20338

### Immunogen

A synthetic peptide corresponding to a sequence within amino acids 1-100 of human RAB4A (P20338).

### Synonyms

RAB4; HRES1; HRES-1; HRES-1/RAB4; RAB4A

## Contact

☎ | 400-999-6126

✉ | [cn.market@abclonal.com.cn](mailto:cn.market@abclonal.com.cn)

🌐 | [www.abclonal.com.cn](http://www.abclonal.com.cn)

## Product Information

### Source

Rabbit

### Isotype

IgG

### Purification

Affinity purification

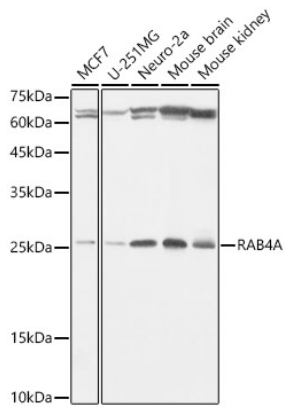
### Storage

Store at -20°C. Avoid freeze / thaw cycles.

Buffer: PBS with 0.02% sodium azide, 0.05% BSA, 50% glycerol, pH7.3.

## Validation Data

---



Western blot analysis of various lysates, using RAB4A Rabbit mAb (A3979) at 1:1000 dilution.  
Secondary antibody: HRP Goat Anti-Rabbit IgG (H+L) (AS014) at 1:10000 dilution.  
Lysates/proteins: 25µg per lane.  
Blocking buffer: 3% nonfat dry milk in TBST.  
Detection: ECL Basic Kit (RM00020).  
Exposure time: 1s.