

# NDUFB10 Rabbit pAb

Catalog No.: A3982 **1 Publications**

## Basic Information

### Observed MW

21kDa

### Calculated MW

21kDa

### Category

Primary antibody

### Applications

ELISA, WB, IP

### Cross-Reactivity

Human, Mouse, Rat

## Background

Involved in mitochondrial respiratory chain complex I assembly. Located in mitochondrial inner membrane. Part of mitochondrial respiratory chain complex I. Implicated in nuclear type mitochondrial complex I deficiency 35.

## Recommended Dilutions

**WB** 1:500 - 1:2000

**IP** 0.5µg-4µg antibody for  
200µg-400µg extracts of  
whole cells

## Immunogen Information

### Gene ID

4716

### Swiss Prot

O96000

### Immunogen

Recombinant fusion protein containing a sequence corresponding to amino acids 1-172 of human NDUFB10 (NP\_004539.1).

### Synonyms

PDSW; MC1DN35; NDUFB10

## Contact

 | 400-999-6126

 | [cn.market@abclonal.com.cn](mailto:cn.market@abclonal.com.cn)

 | [www.abclonal.com.cn](http://www.abclonal.com.cn)

## Product Information

### Source

Rabbit

### Isotype

IgG

### Purification

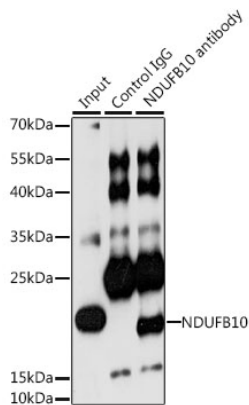
Affinity purification

### Storage

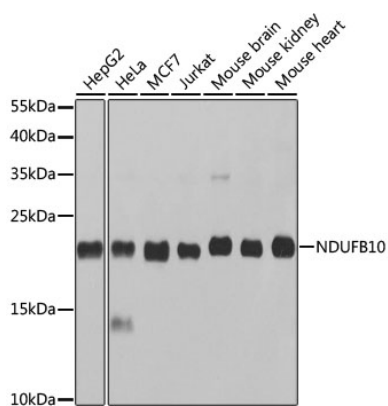
Store at -20°C. Avoid freeze / thaw cycles.

Buffer: PBS with 0.02% sodium azide, 50% glycerol, pH 7.3.

## Validation Data



Immunoprecipitation analysis of 200  $\mu$ g extracts of HeLa cells, using 3  $\mu$ g NDUFB10 antibody (A3982). Western blot was performed from the immunoprecipitate using NDUFB10 antibody (A3982) at a dilution of 1:1000.



Western blot analysis of various lysates using NDUFB10 Rabbit pAb (A3982) at 1:1000 dilution. Secondary antibody: HRP Goat Anti-Rabbit IgG (H+L) (AS014) at 1:10000 dilution. Lysates/proteins: 25 $\mu$ g per lane. Blocking buffer: 3% nonfat dry milk in TBST. Detection: ECL Basic Kit (RM00020). Exposure time: 10s.