

DRG1 Rabbit pAb

Catalog No.: A3987 **1 Publications**

Basic Information

Observed MW

41kDa

Calculated MW

41kDa

Category

Primary antibody

Applications

ELISA, WB

Cross-Reactivity

Human, Mouse, Rat

Background

Enables several functions, including GTPase activity; identical protein binding activity; and potassium ion binding activity. Involved in positive regulation of microtubule polymerization and regulation of mitotic spindle assembly. Located in cytosol and nuclear body. Part of polysome.

Recommended Dilutions

WB 1:500 - 1:2000

Immunogen Information

Gene ID

4733

Swiss Prot

Q9Y295

Immunogen

Recombinant fusion protein containing a sequence corresponding to amino acids 158-367 of human DRG1 (NP_004138.1).

Synonyms

NEDD3; DRG1

Contact

 | 400-999-6126

 | cn.market@abclonal.com.cn

 | www.abclonal.com.cn

Product Information

Source

Rabbit

Isotype

IgG

Purification

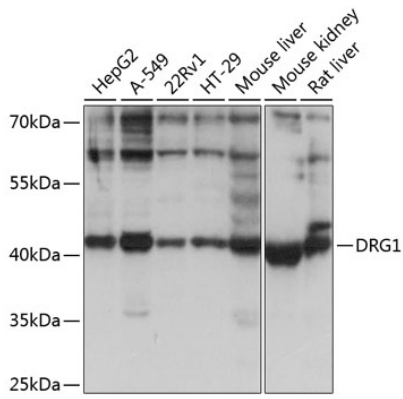
Affinity purification

Storage

Store at -20°C. Avoid freeze / thaw cycles.

Buffer: PBS with 0.01% thimerosal, 50% glycerol, pH7.3.

Validation Data



Western blot analysis of various lysates using DRG1 Rabbit pAb (A3987) at 1:1000 dilution.
Secondary antibody: HRP Goat Anti-Rabbit IgG (H+L) (AS014) at 1:10000 dilution.
Lysates/proteins: 25µg per lane.
Blocking buffer: 3% nonfat dry milk in TBST.
Detection: ECL Basic Kit (RM00020).
Exposure time: 5s.