

# Thioredoxin 1 (Trx1/TXN) Rabbit mAb

Catalog No.: A4024 **Recombinant**

## Basic Information

### Observed MW

14kDa

### Calculated MW

12kDa

### Category

Primary antibody

### Applications

ELISA, WB, IHC-P

### Cross-Reactivity

Human, Mouse, Rat

### CloneNo number

ARC2658

## Background

The protein encoded by this gene acts as a homodimer and is involved in many redox reactions. The encoded protein is active in the reversible S-nitrosylation of cysteines in certain proteins, which is part of the response to intracellular nitric oxide. This protein is found in the cytoplasm. Two transcript variants encoding different isoforms have been found for this gene.

## Recommended Dilutions

**WB** 1:500 - 1:1000

**IHC-P** 1:1000 - 1:5000

## Immunogen Information

### Gene ID

7295

### Swiss Prot

P10599

### Immunogen

A synthetic peptide corresponding to a sequence within amino acids 26-105 of human Thioredoxin 1 (Trx1/TXN) (P10599).

### Synonyms

TRX; TRDX; TRX1; Trx80; Thioredoxin 1 (Trx1/TXN)

## Contact

☎ | 400-999-6126

✉ | [cn.market@abclonal.com.cn](mailto:cn.market@abclonal.com.cn)

🌐 | [www.abclonal.com.cn](http://www.abclonal.com.cn)

## Product Information

### Source

Rabbit

### Isotype

IgG

### Purification

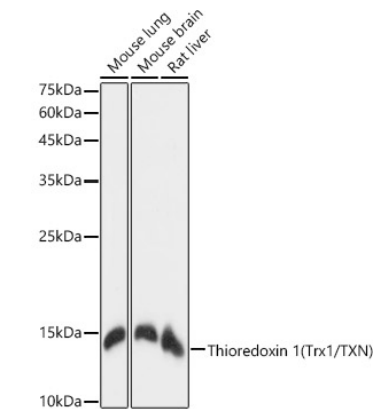
Affinity purification

### Storage

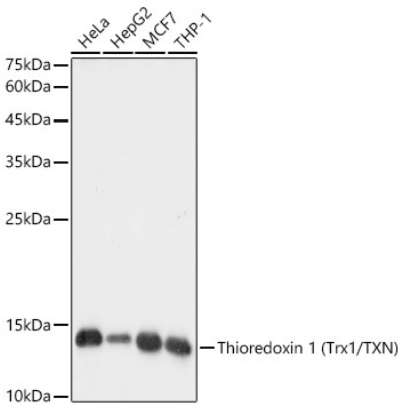
Store at -20°C. Avoid freeze / thaw cycles.

Buffer: PBS with 0.02% sodium azide, 0.05% BSA, 50% glycerol, pH7.3.

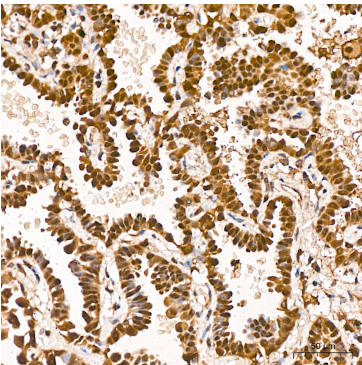
Validation Data



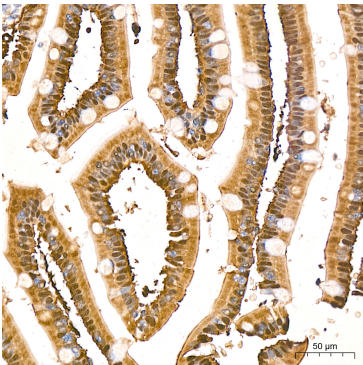
Western blot analysis of various lysates, using Thioredoxin 1 (Trx1/TXN) Rabbit mAb (A4024) at 1:1000 dilution.  
Secondary antibody: HRP Goat Anti-Rabbit IgG (H+L) (AS014) at 1:10000 dilution.  
Lysates/proteins: 25µg per lane.  
Blocking buffer: 3% nonfat dry milk in TBST.  
Detection: ECL Basic Kit (RM00020).  
Exposure time: 1s.



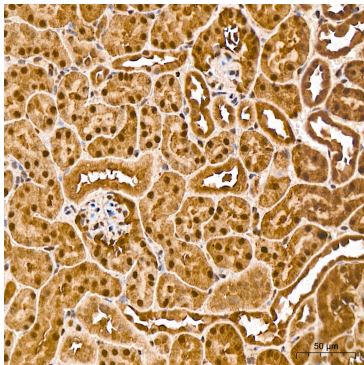
Western blot analysis of various lysates, using Thioredoxin 1 (Trx1/TXN) Rabbit mAb (A4024) at 1:1000 dilution.  
Secondary antibody: HRP Goat Anti-Rabbit IgG (H+L) (AS014) at 1:10000 dilution.  
Lysates/proteins: 25µg per lane.  
Blocking buffer: 3% nonfat dry milk in TBST.  
Detection: ECL Basic Kit (RM00020).  
Exposure time: 10s.



Immunohistochemistry analysis of Thioredoxin 1 (Trx1/TXN) in paraffin-embedded Human lung adenocarcinoma tissue using Thioredoxin 1 (Trx1/TXN) Rabbit mAb (A4024) at a dilution of 1:1600 (40x lens). High pressure antigen retrieval was performed with 0.01 M citrate buffer (pH 6.0) prior to IHC staining.



Immunohistochemistry analysis of Thioredoxin 1 (Trx1/TXN) in paraffin-embedded human small intestine tissue using Thioredoxin 1 (Trx1/TXN) Rabbit mAb (A4024) at a dilution of 1:1600 (40x lens). High pressure antigen retrieval was performed with 0.01 M citrate buffer (pH 6.0) prior to IHC staining.



Immunohistochemistry analysis of Thioredoxin 1 (Trx1/TXN) in paraffin-embedded mouse kidney tissue using Thioredoxin 1 (Trx1/TXN) Rabbit mAb (A4024) at a dilution of 1:1600 (40x lens). High pressure antigen retrieval was performed with 0.01 M citrate buffer (pH 6.0) prior to IHC staining.