

# PRSS8 Rabbit pAb

Catalog No.: A4051 **1 Publications**

## Basic Information

### Observed MW

38kDa

### Calculated MW

36kDa

### Category

Primary antibody

### Applications

WB

### Cross-Reactivity

Human

## Background

This gene encodes a member of the peptidase S1 or chymotrypsin family of serine proteases. The encoded preproprotein is proteolytically processed to generate light and heavy chains that associate via a disulfide bond to form the heterodimeric enzyme. This enzyme is highly expressed in prostate epithelia and is one of several proteolytic enzymes found in seminal fluid. This protease exhibits trypsin-like substrate specificity, cleaving protein substrates at the carboxyl terminus of lysine or arginine residues. The encoded protease partially mediates proteolytic activation of the epithelial sodium channel, a regulator of sodium balance, and may also play a role in epithelial barrier formation.

## Recommended Dilutions

WB 1:500 - 1:1000

## Immunogen Information

### Gene ID

5652

### Swiss Prot

Q16651

### Immunogen

A synthetic Peptide of human PRSS8

### Synonyms

CAP1; PROSTASIN; PRSS8

## Contact

☎ | 400-999-6126

✉ | [cn.market@abclonal.com.cn](mailto:cn.market@abclonal.com.cn)

🌐 | [www.abclonal.com.cn](http://www.abclonal.com.cn)

## Product Information

### Source

Rabbit

### Isotype

IgG

### Purification

Affinity purification

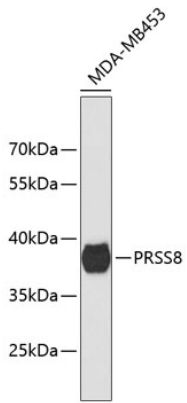
### Storage

Store at 4°C. Avoid freeze / thaw cycles.

Buffer: PBS with 0.02% sodium azide, pH7.3.

## Validation Data

---



Western blot analysis of extracts of MDA-MB-453 cells, using PRSS8 antibody (A4051).  
Secondary antibody: HRP Goat Anti-Rabbit IgG (H+L) (AS014) at 1:10000 dilution.  
Lysates/proteins: 25µg per lane.  
Blocking buffer: 3% nonfat dry milk in TBST.