

# Integrin alpha 4 (ITGA4/CD49d) Rabbit mAb

Catalog No.: A4054 **Recombinant**

## Basic Information

### Observed MW

70kDa/140kDa/150kDa/200kDa

### Calculated MW

115kDa

### Category

Primary antibody

### Applications

ELISA, WB, IHC-P

### Cross-Reactivity

Human, Mouse, Rat

### CloneNo number

ARC0888

## Background

The gene encodes a member of the integrin alpha chain family of proteins. Integrins are heterodimeric integral membrane proteins composed of an alpha chain and a beta chain that function in cell surface adhesion and signaling. The encoded preproprotein is proteolytically processed to generate light and heavy chains that comprise the alpha 4 subunit. This subunit associates with a beta 1 or beta 7 subunit to form an integrin that may play a role in cell motility and migration. This integrin is a therapeutic target for the treatment of multiple sclerosis, Crohn's disease and inflammatory bowel disease. Alternative splicing results in multiple transcript variants.

## Recommended Dilutions

<b>WB</b>	1:500 - 1:2000
<b>IHC-P</b>	1:50 - 1:200

## Immunogen Information

### Gene ID

3676

### Swiss Prot

P13612

### Immunogen

A synthetic peptide corresponding to a sequence within amino acids 933-1032 of human Integrin alpha 4 (ITGA4/CD49d) (P13612).

### Synonyms

IA4; CD49D; Integrin alpha 4 (ITGA4/CD49d)

## Contact

 | 400-999-6126 | [cn.market@abclonal.com.cn](mailto:cn.market@abclonal.com.cn) | [www.abclonal.com.cn](http://www.abclonal.com.cn)

## Product Information

### Source

Rabbit

### Isotype

IgG

### Purification

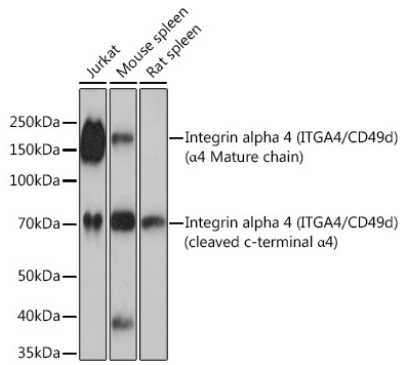
Affinity purification

### Storage

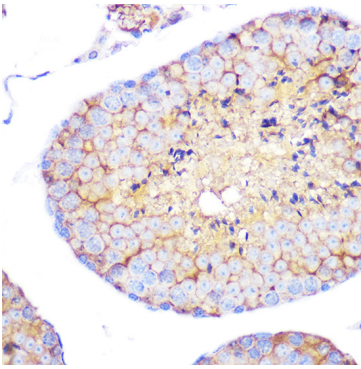
Store at -20°C. Avoid freeze / thaw cycles.

Buffer: PBS with 0.02% sodium azide, 0.05% BSA, 50% glycerol, pH7.3.

## Validation Data



Western blot analysis of various lysates using Integrin alpha 4 (ITGA4/CD49d) (ITGA4/CD49d) Rabbit mAb (A4054) at 1:1000 dilution.  
Secondary antibody: HRP Goat Anti-Rabbit IgG (H+L) (AS014) at 1:10000 dilution.  
Lysates/proteins: 25µg per lane.  
Blocking buffer: 3% nonfat dry milk in TBST.  
Detection: ECL Basic Kit (RM00020).  
Exposure time: 3min.



Immunohistochemistry analysis of paraffin-embedded mouse testis using Integrin alpha 4 (ITGA4/CD49d) (ITGA4/CD49d) Rabbit mAb (A4054) at dilution of 1:100 (40x lens). Perform microwave antigen retrieval with 10 mM PBS buffer pH 7.2 before commencing with IHC staining protocol.