

SMMHC/MYH11 Rabbit mAb

Catalog No.: A4064 **Recombinant** **7 Publications**

Basic Information

Observed MW

250kDa

Calculated MW

227kDa

Category

Primary antibody

Applications

WB,IHC-P,IF/ICC,ELISA

Cross-Reactivity

Human, Mouse, Rat

CloneNo number

ARC51911

Background

The protein encoded by this gene is a smooth muscle myosin belonging to the myosin heavy chain family. The gene product is a subunit of a hexameric protein that consists of two heavy chain subunits and two pairs of non-identical light chain subunits. It functions as a major contractile protein, converting chemical energy into mechanical energy through the hydrolysis of ATP. A chromosomal rearrangement involving this gene is associated with acute myeloid leukemia of the M4Eo subtype. Mutations in this gene are associated with visceral myopathy, megacystis-microcolon-intestinal hypoperistalsis syndrome 2, and familial thoracic aortic aneurysm 4.

Recommended Dilutions

WB	1:500 - 1:1000
IHC-P	1:500 - 1:5000
IF/ICC	1:400 - 1:1600
ELISA	Recommended starting concentration is 1 µg/mL. Please optimize the concentration based on your specific assay requirements.

Contact

	400-999-6126
	cn.market@abclonal.com.cn
	www.abclonal.com.cn

Immunogen Information

Gene ID

4629

Swiss Prot

P35749

Immunogen

Recombinant fusion protein containing a sequence corresponding to amino acids 1160-1313 of human SMMHC/MYH11 (NP_002465.1).

Synonyms

AAT4; FAA4; SMHC; SMMHC; VSCM2; SMMS-1; SMMHC/MYH11

Product Information

Source

Rabbit

Isotype

IgG

Purification

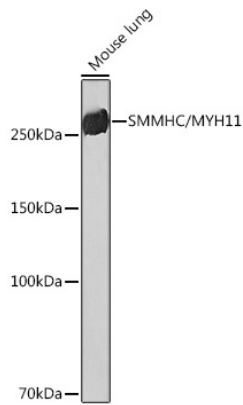
Affinity purification

Storage

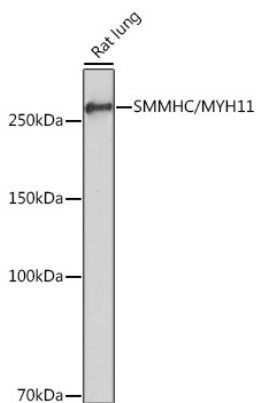
Store at -20°C. Avoid freeze / thaw cycles.

Buffer: PBS with 0.05% proclin300,0.05% BSA,50% glycerol,pH7.3.

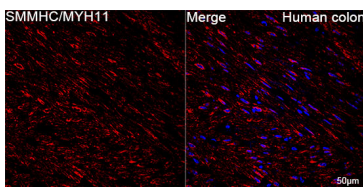
Validation Data



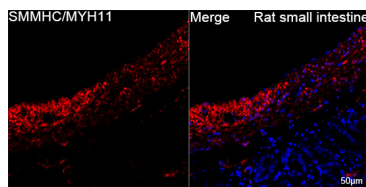
Western blot analysis of lysates from Mouse lung, using SMMHC/SMMHC/MYH11 Rabbit mAb (A4064) at 1:1000 dilution.
 Secondary antibody: HRP-conjugated Goat anti-Rabbit IgG (H+L) (AS014) at 1:10000 dilution.
 Lysates/proteins: 25µg per lane.
 Blocking buffer: 3% nonfat dry milk in TBST.
 Detection: ECL Basic Kit (RM00020).
 Exposure time: 3min.



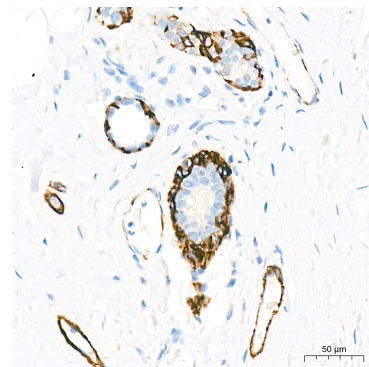
Western blot analysis of lysates from Rat lung, using SMMHC/SMMHC/MYH11 Rabbit mAb (A4064) at 1:1000 dilution.
 Secondary antibody: HRP-conjugated Goat anti-Rabbit IgG (H+L) (AS014) at 1:10000 dilution.
 Lysates/proteins: 25µg per lane.
 Blocking buffer: 3% nonfat dry milk in TBST.
 Detection: ECL Enhanced Kit (RM00021).
 Exposure time: 3min.



Confocal imaging of paraffin-embedded Human colon using SMMHC/MYH11 Rabbit mAb (A4064, dilution 1:800) followed by a further incubation with Cy3 Goat Anti-Rabbit IgG (H+L) (AS007, dilution 1:500) (Red). DAPI was used for nuclear staining (Blue).
 Objective: 40x. Perform high pressure antigen retrieval with 0.01 M citRate buffer (pH 6.0) prior to IF staining.

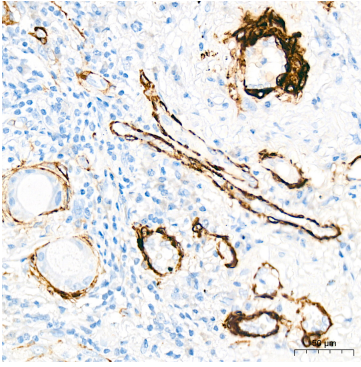


Confocal imaging of paraffin-embedded Rat small intestine using SMMHC/MYH11 Rabbit mAb (A4064, dilution 1:800) followed by a further incubation with Cy3 Goat Anti-Rabbit IgG (H+L) (AS007, dilution 1:500) (Red). DAPI was used for nuclear staining (Blue).
 Objective: 40x. Perform high pressure antigen retrieval with 0.01 M citRate buffer (pH 6.0) prior to IF staining.

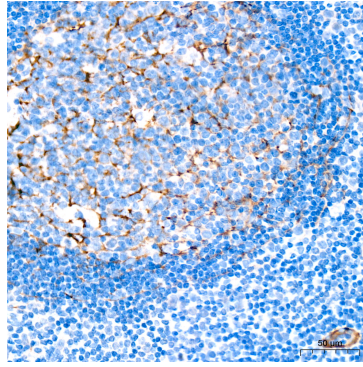


Immunohistochemistry analysis of paraffin-embedded Human breast tissue using SMMHC/MYH11 Rabbit mAb (A4064) at a dilution of 1:1000 (40x lens). High pressure antigen retrieval performed with 0.01M Citrate Buffer (pH 6.0) prior to IHC staining.

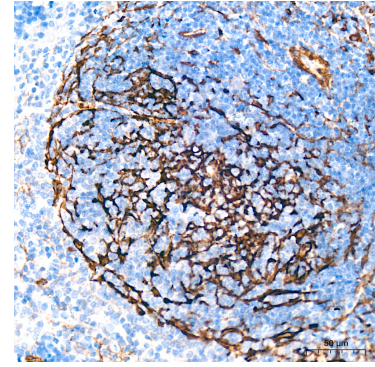
Validation Data



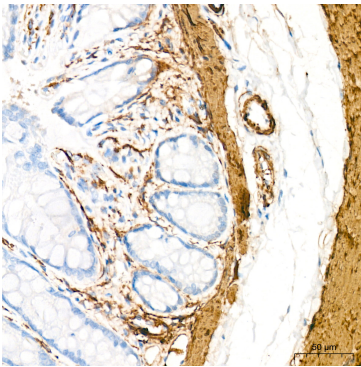
Immunohistochemistry analysis of paraffin-embedded Human lung tissue using SMMHC/MYH11 Rabbit mAb (A4064) at a dilution of 1:1000 (40x lens). High pressure antigen retrieval performed with 0.01M Citrate Buffer (pH 6.0) prior to IHC staining.



Immunohistochemistry analysis of paraffin-embedded Human tonsil tissue using SMMHC/MYH11 Rabbit mAb (A4064) at a dilution of 1:1000 (40x lens). High pressure antigen retrieval performed with 0.01M Citrate Buffer (pH 6.0) prior to IHC staining.



Immunohistochemistry analysis of paraffin-embedded Mouse spleen tissue using SMMHC/MYH11 Rabbit mAb (A4064) at a dilution of 1:1000 (40x lens). High pressure antigen retrieval performed with 0.01M Citrate Buffer (pH 6.0) prior to IHC staining.



Immunohistochemistry analysis of paraffin-embedded Rat colon tissue using SMMHC/MYH11 Rabbit mAb (A4064) at a dilution of 1:1000 (40x lens). High pressure antigen retrieval performed with 0.01M Citrate Buffer (pH 6.0) prior to IHC staining.