

CD48 Rabbit mAb

Catalog No.: A4084 **Recombinant**

Basic Information

Observed MW

46kDa

Calculated MW

19kDa/27kDa

Category

Primary antibody

Applications

WB,FC,ELISA

Cross-Reactivity

Human, Mouse

CloneNo number

ARC53030

Background

This gene encodes a member of the CD2 subfamily of immunoglobulin-like receptors which includes SLAM (signaling lymphocyte activation molecules) proteins. The encoded protein is found on the surface of lymphocytes and other immune cells, dendritic cells and endothelial cells, and participates in activation and differentiation pathways in these cells. The encoded protein does not have a transmembrane domain, however, but is held at the cell surface by a GPI anchor via a C-terminal domain which maybe cleaved to yield a soluble form of the receptor. Multiple transcript variants encoding different isoforms have been found for this gene.

Recommended Dilutions

WB 1:2000 - 1:20000**FC** 1:50 - 1:200

ELISA Recommended starting concentration is 1 µg/mL. Please optimize the concentration based on your specific assay requirements.

Immunogen Information

Gene ID

962

Swiss Prot

P09326

Immunogen

Recombinant protein (or fragment). This information is considered to be commercially sensitive.

Synonyms

BCM1; BLAST; hCD48; mCD48; BLAST1; SLAMF2; MEM-102; CD48

Contact

 | 400-999-6126 | cn.market@abclonal.com.cn | www.abclonal.com.cn

Product Information

Source

Rabbit

Isotype

IgG

Purification

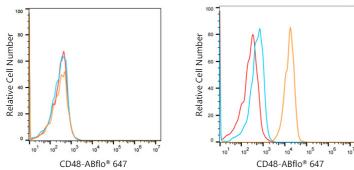
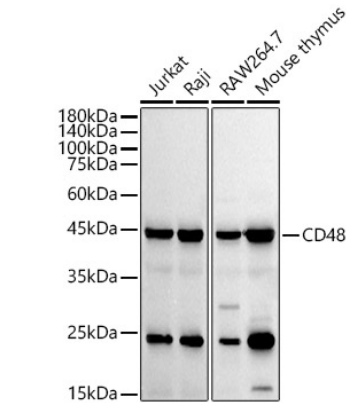
Affinity purification

Storage

Store at -20°C. Avoid freeze / thaw cycles.

Buffer: PBS containing 50% glycerol and 0.05% BSA, preserved with proclin300 or sodium azide (as specified on the Certificate of Analysis), pH 7.3.

Validation Data



Flow cytometry: 1X10⁶ K-562 cells (negative control, left) and Daudi cells (right) were surface-stained with CD48 Rabbit mAb(A4084, 10 µg/mL orange line) or ABflo® 647 Rabbit IgG isotype control(AC042, 10 µg/mL, blue line). Non-fluorescently stained cells were used as blank control (red line).