

SH3GL3 Rabbit pAb

Catalog No.: A4112

Basic Information

Observed MW

39kDa

Calculated MW

39kDa

Category

Primary antibody

Applications

ELISA, WB

Cross-Reactivity

Human, Mouse, Rat

Background

Enables identical protein binding activity. Predicted to be involved in synaptic vesicle uncoating. Predicted to be located in acrosomal vesicle; early endosome membrane; and presynapse. Predicted to be part of early endosome. Predicted to be active in glutamatergic synapse; postsynaptic density, intracellular component; and postsynaptic endosome.

Recommended Dilutions

WB 1:500 - 1:1000

Immunogen Information

Gene ID

6457

Swiss Prot

Q99963

Immunogen

Recombinant fusion protein containing a sequence corresponding to amino acids 1-270 of human SH3GL3 (NP_003018.3).

Synonyms

CNSA3; EEN-B2; SH3D2C; SH3P13; HsT19371; SH3GL3

Contact

☎ | 400-999-6126

✉ | cn.market@abclonal.com.cn

🌐 | www.abclonal.com.cn

Product Information

Source

Rabbit

Isotype

IgG

Purification

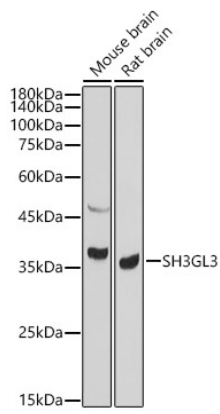
Affinity purification

Storage

Store at -20°C. Avoid freeze / thaw cycles.

Buffer: PBS with 0.02% sodium azide, 50% glycerol, pH 7.3.

Validation Data



Western blot analysis of various lysates, using SH3GL3 antibody (A4112) at 1:1000 dilution.
Secondary antibody: HRP Goat Anti-Rabbit IgG (H+L) (AS014) at 1:10000 dilution.
Lysates/proteins: 25µg per lane.
Blocking buffer: 3% nonfat dry milk in TBST.
Detection: ECL Basic Kit (RM00020).
Exposure time: 90s.