

SLC20A1 Rabbit pAb

Catalog No.: A4117 **2 Publications**

Basic Information

Observed MW

70-100kDa

Calculated MW

74kDa

Category

Primary antibody

Applications

ELISA,WB,IF/ICC

Cross-Reactivity

Human, Mouse, Rat

Background

The protein encoded by this gene is a sodium-phosphate symporter that absorbs phosphate from interstitial fluid for use in cellular functions such as metabolism, signal transduction, and nucleic acid and lipid synthesis. The encoded protein is also a retroviral receptor, causing human cells to be susceptible to infection by gibbon ape leukemia virus, simian sarcoma-associated virus, feline leukemia virus subgroup B, and 10A1 murine leukemia virus.

Recommended Dilutions

WB 1:200 - 1:2000

IF/ICC 1:50 - 1:200

Immunogen Information

Gene ID

6574

Swiss Prot

Q8WUM9

Immunogen

Recombinant fusion protein containing a sequence corresponding to amino acids 257-356 of human SLC20A1 (NP_005406.3).

Synonyms

PIT1; GLVR1; PiT-1; Glvr-1; SLC20A1

Contact

☎ | 400-999-6126

✉ | cn.market@abclonal.com.cn

🌐 | www.abclonal.com.cn

Product Information

Source

Rabbit

Isotype

IgG

Purification

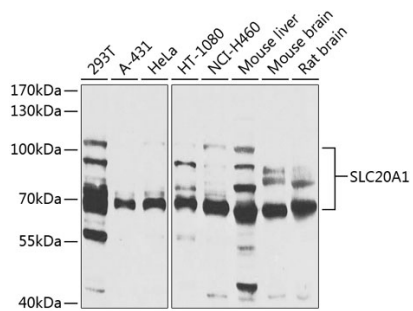
Affinity purification

Storage

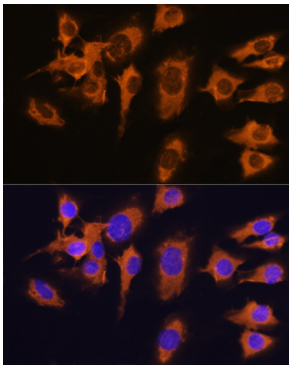
Store at -20°C. Avoid freeze / thaw cycles.

Buffer: PBS with 0.02% sodium azide,50% glycerol,pH7.3.

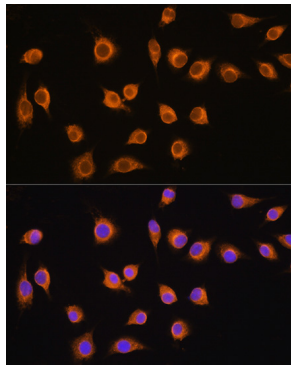
Validation Data



Western blot analysis of extracts of various cell lines, using SLC20A1 antibody (A4117) at 1:1000 dilution. Secondary antibody: HRP Goat Anti-Rabbit IgG (H+L) (AS014) at 1:10000 dilution. Lysates/proteins: 25µg per lane. Blocking buffer: 3% nonfat dry milk in TBST. Detection: ECL Basic Kit (RM00020). Exposure time: 15s.



Immunofluorescence analysis of C6 cells using SLC20A1 antibody (A4117) at dilution of 1:100. Blue: DAPI for nuclear staining.



Immunofluorescence analysis of L929 cells using SLC20A1 antibody (A4117) at dilution of 1:100. Blue: DAPI for nuclear staining.