

[KD Validated] KMT5A/SETD8 Rabbit mAb

Catalog No.: A4136 **Recombinant**

Basic Information

Observed MW

49kDa

Calculated MW

43kDa

Category

Primary antibody

Applications

ELISA, WB

Cross-Reactivity

Human, Mouse

CloneNo number

ARC0916

Background

The protein encoded by this gene is a protein-lysine N-methyltransferase that can monomethylate Lys-20 of histone H4 to effect transcriptional repression of some genes. The encoded protein is required for cell proliferation and plays a role in chromatin condensation.

Recommended Dilutions

WB 1:500 - 1:1000

Immunogen Information

Gene ID

387893

Swiss Prot

Q9NQR1

Immunogen

A synthetic peptide corresponding to a sequence within amino acids 1-100 of human KMT5A/SETD8 (Q9NQR1).

Synonyms

SET8; SET07; SETD8; PR-Set7; PR/SET07; [KO/KD Validated] KMT5A/SETD8

Contact

 | 400-999-6126

 | cn.market@abclonal.com.cn

 | www.abclonal.com.cn

Product Information

Source

Rabbit

Isotype

IgG

Purification

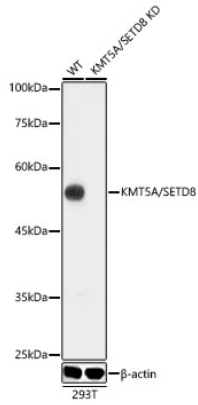
Affinity purification

Storage

Store at -20°C. Avoid freeze / thaw cycles.

Buffer: PBS with 0.02% sodium azide, 0.05% BSA, 50% glycerol, pH7.3.

Validation Data



Western blot analysis of lysates from wild type(WT) and KMT5A/SETD8 knockdown (KD) 293T cells, using [KD Validated] KMT5A/SETD8 Rabbit mAb (A4136) at 1:1000 dilution.

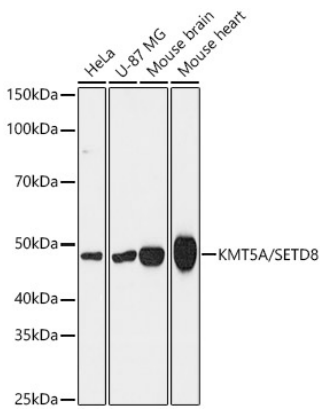
Secondary antibody: HRP Goat Anti-Rabbit IgG (H+L) (AS014) at 1:10000 dilution.

Lysates/proteins: 25µg per lane.

Blocking buffer: 3% nonfat dry milk in TBST.

Enhanced Kit (RM00021).

Exposure time: 30s.



Western blot analysis of various lysates, using [KD Validated] KMT5A/SETD8 Rabbit mAb (A4136) at 1:1000 dilution.

Secondary antibody: HRP Goat Anti-Rabbit IgG (H+L) (AS014) at 1:10000 dilution.

Lysates/proteins: 25ug per lane.

Blocking buffer: 3% nonfat dry milk in TBST.

Detection: ECL Basic Kit (RM00020).

Exposure time: 180s.