

GLUT3/SLC2A3 Rabbit mAb

Catalog No.: A4137 **Recombinant** **2 Publications**

Basic Information

Observed MW

48-60kDa

Calculated MW

54kDa

Category

Primary antibody

Applications

ELISA, WB, IP

Cross-Reactivity

Human, Mouse, Rat

CloneNo number

ARC0917

Background

Enables dehydroascorbic acid transmembrane transporter activity; glucose binding activity; and glucose transmembrane transporter activity. Involved in glucose import across plasma membrane and transport across blood-brain barrier. Is integral component of plasma membrane. Biomarker of Alzheimer's disease; acanthosis nigricans; diabetes mellitus; and type 2 diabetes mellitus.

Recommended Dilutions

WB 1:500 - 1:2000

IP 0.5µg-4µg antibody for
400µg-600µg extracts of
whole cells

Immunogen Information

Gene ID

6515

Swiss Prot

P11169

Immunogen

A synthetic peptide corresponding to a sequence within amino acids 1-100 of human GLUT3/SLC2A3 (P11169).

Synonyms

GLUT3; GLUT3/SLC2A3

Contact

☎ | 400-999-6126

✉ | cn.market@abclonal.com.cn

🌐 | www.abclonal.com.cn

Product Information

Source

Rabbit

Isotype

IgG

Purification

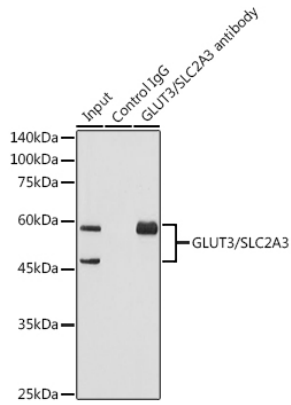
Affinity purification

Storage

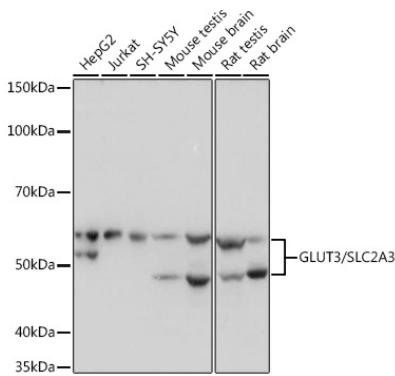
Store at -20°C. Avoid freeze / thaw cycles.

Buffer: PBS with 0.02% sodium azide, 0.05% BSA, 50% glycerol, pH7.3.

Validation Data



Immunoprecipitation analysis of 600 µg extracts of Mouse brain using 3 µg GLUT3/SLC2A3 antibody (A4137). Western blot was performed from the immunoprecipitate using GLUT3/SLC2A3 antibody (A4137) at a dilution of 1:1000.



Western blot analysis of various lysates using GLUT3/SLC2A3 Rabbit mAb (A4137) at 1:1000 dilution. Secondary antibody: HRP Goat Anti-Rabbit IgG (H+L) (AS014) at 1:10000 dilution. Lysates/proteins: 25µg per lane. Blocking buffer: 3% nonfat dry milk in TBST. Detection: ECL Basic Kit (RM00020). Exposure time: 1s.