

BMP15 Rabbit mAb

Catalog No.: A4148 **Recombinant**

Basic Information

Observed MW

50kDa

Calculated MW

45kDa

Category

Primary antibody

Applications

ELISA, WB

Cross-Reactivity

Human, Mouse, Rat

CloneNo number

ARC0907

Background

This gene encodes a secreted ligand of the TGF-beta (transforming growth factor-beta) superfamily of proteins. Ligands of this family bind various TGF-beta receptors leading to recruitment and activation of SMAD family transcription factors that regulate gene expression. The encoded preproprotein is proteolytically processed to generate subunits of a disulfide-linked homodimer, or alternatively, a heterodimer, with the related protein, growth differentiation factor 9 (GDF9). This protein plays a role in oocyte maturation and follicular development, through activation of granulosa cells. Defects in this gene are the cause of ovarian dysgenesis and are associated with premature ovarian failure.

Recommended Dilutions

WB 1:500 - 1:1000

Immunogen Information

Gene ID

9210

Swiss Prot

O95972

Immunogen

A synthetic peptide corresponding to a sequence within amino acids 293-392 of human BMP15 (O95972).

Synonyms

ODG2; POF4; GDF9B; BMP15

Contact

☎ | 400-999-6126

✉ | cn.market@abclonal.com.cn

🌐 | www.abclonal.com.cn

Product Information

Source

Rabbit

Isotype

IgG

Purification

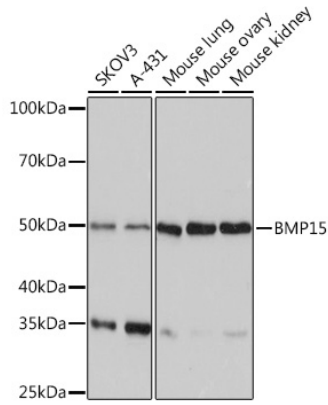
Affinity purification

Storage

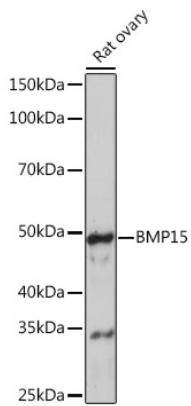
Store at -20°C. Avoid freeze / thaw cycles.

Buffer: PBS with 0.02% sodium azide, 0.05% BSA, 50% glycerol, pH7.3.

Validation Data



Western blot analysis of extracts of various cell lines, using BMP15 Rabbit mAb (A4148) at 1:1000 dilution.
Secondary antibody: HRP Goat Anti-Rabbit IgG (H+L) (AS014) at 1:10000 dilution.
Lysates/proteins: 25µg per lane.
Blocking buffer: 3% nonfat dry milk in TBST.
Detection: ECL Basic Kit (RM00020).
Exposure time: 3min.



Western blot analysis of extracts of Rat ovary, using BMP15 Rabbit mAb (A4148) at 1:1000 dilution.
Secondary antibody: HRP Goat Anti-Rabbit IgG (H+L) (AS014) at 1:10000 dilution.
Lysates/proteins: 25µg per lane.
Blocking buffer: 3% nonfat dry milk in TBST.
Detection: ECL Enhanced Kit (RM00021).
Exposure time: 3min.