

Epac1/RAPGEF3 Rabbit mAb

Catalog No.: A4149 **Recombinant**

Basic Information

Observed MW

100kDa

Calculated MW

104kDa

Category

Primary antibody

Applications

ELISA, WB, IHC-P

Cross-Reactivity

Human, Mouse, Rat

CloneNo number

ARC0908

Background

Enables guanyl-nucleotide exchange factor activity and protein domain specific binding activity. Involved in several processes, including positive regulation of protein modification process

Recommended Dilutions

WB	1:500 - 1:1000
IHC-P	1:50 - 1:200

Immunogen Information

Gene ID

10411

Swiss Prot

O95398

Immunogen

A synthetic peptide corresponding to a sequence within amino acids 824-923 of human Epac1/RAPGEF3 (O95398).

Synonyms

EPAC; Epac1/RAPGEF3

Contact

 | 400-999-6126

 | cn.market@abclonal.com.cn

 | www.abclonal.com.cn

Product Information

Source

Rabbit

Isotype

IgG

Purification

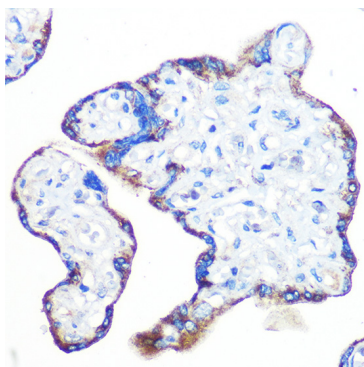
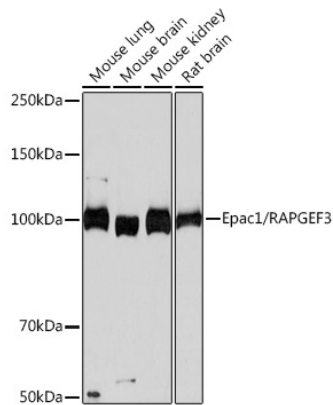
Affinity purification

Storage

Store at -20°C. Avoid freeze / thaw cycles.

Buffer: PBS with 0.02% sodium azide, 0.05% BSA, 50% glycerol, pH7.3.

Validation Data



Immunohistochemistry analysis of paraffin-embedded human placenta using Epac1/RAPGEF3 Rabbit mAb (A4149) at dilution of 1:100 (40x lens). Perform microwave antigen retrieval with 10 mM PBS buffer pH 7.2 before commencing with IHC staining protocol.