

ESRRA Rabbit mAb

Catalog No.: A4176 **Recombinant** **1 Publications**

Basic Information

Observed MW

48-50kDa

Calculated MW

46kDa

Category

Primary antibody

Applications

ELISA, WB

Cross-Reactivity

Human, Mouse

CloneNo number

ARC0919

Background

The protein encoded by this gene is a nuclear receptor that is most closely related to the estrogen receptor. This protein acts as a site-specific transcription factor and interacts with members of the PGC-1 family of transcription cofactors to regulate the expression of most genes involved in cellular energy production as well as in the process of mitochondrial biogenesis. A processed pseudogene of ESRRA is located on chromosome 13q12.1.

Recommended Dilutions

WB 1:500 - 1:1000

Immunogen Information

Gene ID

2101

Swiss Prot

P11474

Immunogen

A synthetic peptide corresponding to a sequence within amino acids 1-100 of human ESRRA (P11474).

Synonyms

ERR1; ERRa; ESRL1; NR3B1; ERRalpha; ESRRRA

Contact

 | 400-999-6126

 | cn.market@abclonal.com.cn

 | www.abclonal.com.cn

Product Information

Source

Rabbit

Isotype

IgG

Purification

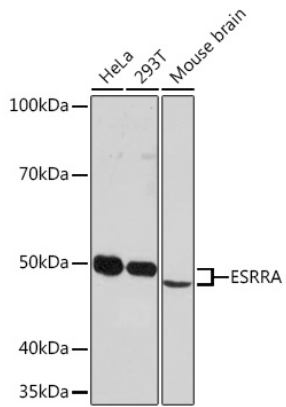
Affinity purification

Storage

Store at -20°C. Avoid freeze / thaw cycles.

Buffer: PBS with 0.02% sodium azide, 0.05% BSA, 50% glycerol, pH7.3.

Validation Data



Western blot analysis of extracts of various cell lines, using ESRRRA Rabbit mAb (A4176) at 1:1000 dilution.
Secondary antibody: HRP Goat Anti-Rabbit IgG (H+L) (AS014) at 1:10000 dilution.
Lysates/proteins: 25 μ g per lane.
Blocking buffer: 3% nonfat dry milk in TBST.
Detection: ECL Enhanced Kit (RM00021).
Exposure time: 3min.