

Emerin/EMD Rabbit mAb

Catalog No.: A4187 **Recombinant**

Basic Information

Observed MW

30kDa/35kDa

Calculated MW

29kDa

Category

Primary antibody

Applications

ELISA, WB, IHC-P, IF/ICC

Cross-Reactivity

Human, Mouse, Rat

CloneNo number

ARC0921

Background

Emerin is a serine-rich nuclear membrane protein and a member of the nuclear lamina-associated protein family. It mediates membrane anchorage to the cytoskeleton. Dreifuss-Emerin muscular dystrophy is an X-linked inherited degenerative myopathy resulting from mutation in the emerin gene.

Recommended Dilutions

WB	1:500 - 1:1000
IHC-P	1:50 - 1:200
IF/ICC	1:50 - 1:200

Immunogen Information

Gene ID

2010

Swiss Prot

P50402

Immunogen

A synthetic peptide corresponding to a sequence within amino acids 150-254 of human Emerin/EMD (P50402).

Synonyms

STA; EDMD; LEMD5; Emerin/EMD

Contact

☎ | 400-999-6126

✉ | cn.market@abclonal.com.cn

🌐 | www.abclonal.com.cn

Product Information

Source

Rabbit

Isotype

IgG

Purification

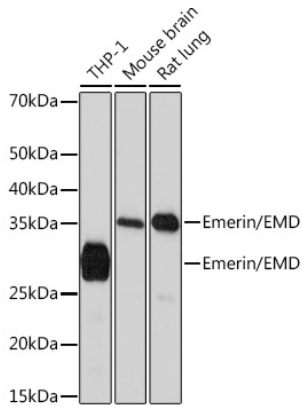
Affinity purification

Storage

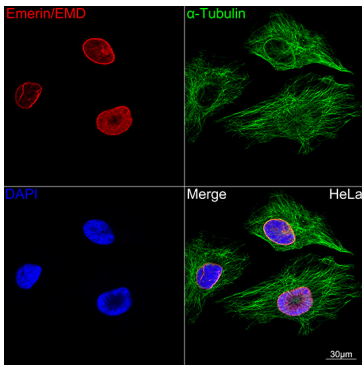
Store at -20°C. Avoid freeze / thaw cycles.

Buffer: PBS with 0.02% sodium azide, 0.05% BSA, 50% glycerol, pH7.3.

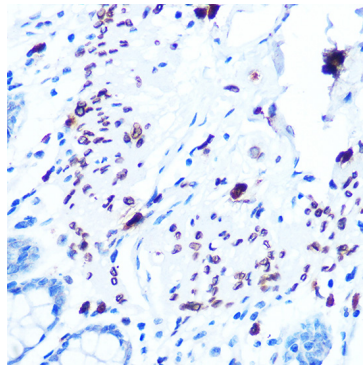
Validation Data



Western blot analysis of various lysates using Emerin/EMD Rabbit mAb (A4187) at 1:1000 dilution.
Secondary antibody: HRP Goat Anti-Rabbit IgG (H+L) (AS014) at 1:10000 dilution.
Lysates/proteins: 25µg per lane.
Blocking buffer: 3% nonfat dry milk in TBST.
Detection: ECL Basic Kit (RM00020).
Exposure time: 90s.



Confocal imaging of HeLa cells using Emerin/EMD Rabbit mAb (A4187, dilution 1:100) (Red). The cells were counterstained with Alpha-tubulin (ubiquitous) chain Rabbit mAb (AC049, dilution 1:100) (Green). DAPI was used for nuclear staining (blue). Objective: 60x.



Immunohistochemistry analysis of paraffin-embedded human colon using Emerin/EMD Rabbit mAb (A4187) at dilution of 1:100 (40x lens). Perform microwave antigen retrieval with 10 mM PBS buffer pH 7.2 before commencing with IHC staining protocol.