

tPA/PLAT Rabbit mAb

Catalog No.: A4210

Recombinant

2 Publications

Basic Information

Observed MW

70kDa

Calculated MW

63kDa

Category

Primary antibody

Applications

WB, IF/ICC, IF-P, ELISA

Cross-Reactivity

Human, Mouse, Rat

CloneNo number

ARC0928

Background

This gene encodes tissue-type plasminogen activator, a secreted serine protease that converts the proenzyme plasminogen to plasmin, a fibrinolytic enzyme. The encoded preproprotein is proteolytically processed by plasmin or trypsin to generate heavy and light chains. These chains associate via disulfide linkages to form the heterodimeric enzyme. This enzyme plays a role in cell migration and tissue remodeling. Increased enzymatic activity causes hyperfibrinolysis, which manifests as excessive bleeding, while decreased activity leads to hypofibrinolysis, which can result in thrombosis or embolism. Alternative splicing of this gene results in multiple transcript variants, at least one of which encodes an isoform that is proteolytically processed.

Recommended Dilutions

WB 1:1000 - 1:6000**IF/ICC** 1:100 - 1:400**IF-P** 1:100 - 1:400

ELISA Recommended starting concentration is 1 µg/mL. Please optimize the concentration based on your specific assay requirements.

Immunogen Information

Gene ID

5327

Swiss Prot

P00750

Immunogen

Synthetic peptide. This information is considered to be commercially sensitive.

Synonyms

TPA; T-PA; tPA/PLAT

Contact

 | 400-999-6126 | cn.market@abclonal.com.cn | www.abclonal.com.cn

Product Information

Source

Rabbit

Isotype

IgG

Purification

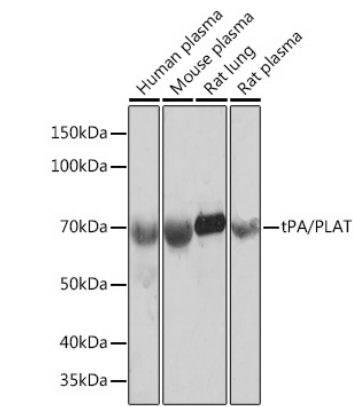
Affinity purification

Storage

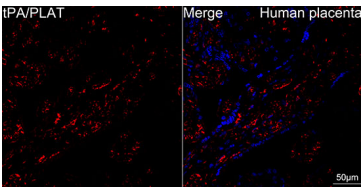
Store at -20°C. Avoid freeze / thaw cycles.

Buffer: PBS containing 50% glycerol and 0.05% BSA, preserved with proclin300 or sodium azide (as specified on the Certificate of Analysis), pH 7.3.

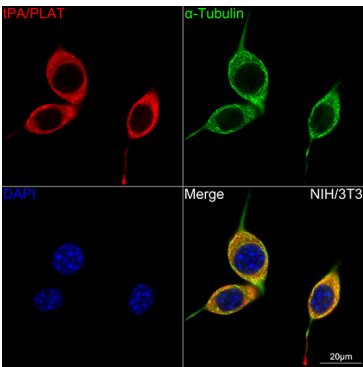
Validation Data



Western blot analysis of various lysates using tPA/tPA/PLAT Rabbit mAb (A4210) at 1:1000 dilution. Secondary antibody: HRP-conjugated Goat anti-Rabbit IgG (H+L) (AS014) at 1:10000 dilution. Lysates/proteins: 25µg per lane. Blocking buffer: 3% nonfat dry milk in TBST. Detection: ECL Basic Kit (RM00020). Exposure time: 10s.



Confocal imaging of human placenta using tPA/PLAT Rabbit mAb (A4210,at dilution of 1:100) (Red). DAPI was used for nuclear staining (blue). Objective: 40x. Perform high pressure antigen retrieval with 10 mM citrate buffer pH 6.0 before commencing with IF staining protocol.



Confocal imaging of NIH/3T3 cells using tPA/PLAT Rabbit mAb (A4210,at dilution of 1:100) (Red). The cells were counterstained with α-Tubulin Mouse mAb (AC012,dilution 1:400) (Green). DAPI was used for nuclear staining (blue). Objective: 100x.