

# UBL4A Rabbit pAb

Catalog No.: A4211

## Basic Information

### Observed MW

14-16kDa

### Calculated MW

18kDa

### Category

Primary antibody

### Applications

ELISA, WB, IP

### Cross-Reactivity

Human, Mouse, Rat

## Background

Enables chaperone binding activity. Involved in tail-anchored membrane protein insertion into ER membrane. Located in cytosol; membrane; and nucleoplasm. Part of BAT3 complex.

## Recommended Dilutions

**WB** 1:200 - 1:1000

**IP** 0.5µg-4µg antibody for  
200µg-400µg extracts of  
whole cells

## Immunogen Information

### Gene ID

8266

### Swiss Prot

P11441

### Immunogen

Recombinant fusion protein containing a sequence corresponding to amino acids 1-157 of human UBL4A (NP\_055050.1).

### Synonyms

GDX; G6PD; GET5; MDY2; UBL4; TMA24; DX254E; DXS254E; UBL4A

## Contact

 | 400-999-6126

 | [cn.market@abclonal.com.cn](mailto:cn.market@abclonal.com.cn)

 | [www.abclonal.com.cn](http://www.abclonal.com.cn)

## Product Information

### Source

Rabbit

### Isotype

IgG

### Purification

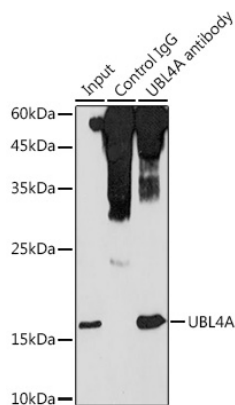
Affinity purification

### Storage

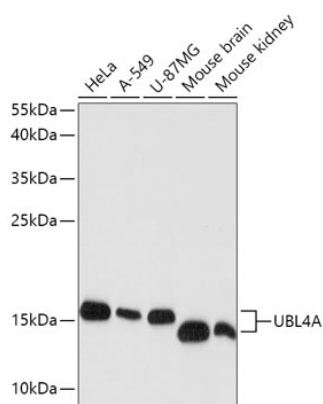
Store at -20°C. Avoid freeze / thaw cycles.

Buffer: PBS with 0.01% thimerosal, 50% glycerol, pH7.3.

## Validation Data



Immunoprecipitation analysis of 300 µg extracts of HeLa cells using 3 µg UBL4A antibody (A4211). Western blot was performed from the immunoprecipitate using UBL4A antibody (A4211) at a dilution of 1:1000.



Western blot analysis of various lysates using UBL4A Rabbit pAb (A4211) at 1:1000 dilution. Secondary antibody: HRP Goat Anti-Rabbit IgG (H+L) (AS014) at 1:10000 dilution. Lysates/proteins: 25µg per lane. Blocking buffer: 3% nonfat dry milk in TBST. Detection: ECL Basic Kit (RM00020). Exposure time: 90s.