

Reptin/RUVBL2 Rabbit mAb

Catalog No.: A4227 **Recombinant**

Basic Information

Observed MW

50kDa

Calculated MW

51kDa

Category

Primary antibody

Applications

ELISA, WB

Cross-Reactivity

Human, Mouse, Rat

CloneNo number

ARC0933

Background

This gene encodes the second human homologue of the bacterial RuvB gene. Bacterial RuvB protein is a DNA helicase essential for homologous recombination and DNA double-strand break repair. Functional analysis showed that this gene product has both ATPase and DNA helicase activities. This gene is physically linked to the CGB/LHB gene cluster on chromosome 19q13.3, and is very close (55 nt) to the LHB gene, in the opposite orientation.

Recommended Dilutions

WB 1:500 - 1:2000

Immunogen Information

Gene ID

10856

Swiss Prot

Q9Y230

Immunogen

A synthetic peptide corresponding to a sequence within amino acids 350-450 of human Reptin/RUVBL2 (Q9Y230).

Synonyms

RVB2; TIH2; ECP51; TIP48; CGI-46; ECP-51; INO80J; REPTIN; TIP49B; TAP54-beta; Reptin/RUVBL2

Contact

☎ | 400-999-6126

✉ | cn.market@abclonal.com.cn

🌐 | www.abclonal.com.cn

Product Information

Source

Rabbit

Isotype

IgG

Purification

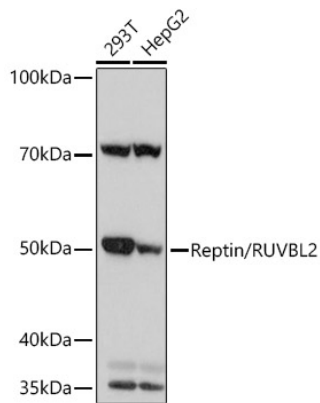
Affinity purification

Storage

Store at -20°C. Avoid freeze / thaw cycles.

Buffer: PBS with 0.02% sodium azide, 0.05% BSA, 50% glycerol, pH7.3.

Validation Data



Western blot analysis of extracts of various cell lines, using Reptin/RUVBL2 Rabbit mAb (A4227) at 1:1000 dilution.

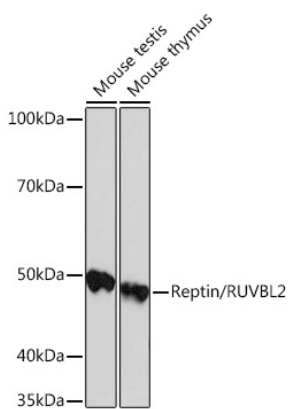
Secondary antibody: HRP Goat Anti-Rabbit IgG (H+L) (AS014) at 1:10000 dilution.

Lysates/proteins: 25µg per lane.

Blocking buffer: 3% nonfat dry milk in TBST.

Detection: ECL Basic Kit (RM00020).

Exposure time: 3s.



Western blot analysis of extracts of various cell lines, using Reptin/RUVBL2 Rabbit mAb (A4227) at 1:1000 dilution.

Secondary antibody: HRP Goat Anti-Rabbit IgG (H+L) (AS014) at 1:10000 dilution.

Lysates/proteins: 25µg per lane.

Blocking buffer: 3% nonfat dry milk in TBST.

Detection: ECL Basic Kit (RM00020).

Exposure time: 90s.