

SIGLEC5 Rabbit pAb

Catalog No.: A4250

Basic Information

Observed MW

70kDa

Calculated MW

61kDa

Category

Primary antibody

Applications

ELISA, WB

Cross-Reactivity

Mouse

Background

This gene encodes a member of the sialic acid-binding immunoglobulin-like lectin (Siglec) family. These cell surface lectins are characterized by structural motifs in the immunoglobulin (Ig)-like domains and sialic acid recognition sites in the first Ig V set domain. The encoded protein is a member of the CD33-related subset of Siglecs and inhibits the activation of several cell types including monocytes, macrophages and neutrophils. Binding of group B Streptococcus (GBS) to the encoded protein plays a role in GBS immune evasion.

Recommended Dilutions

WB 1:500 - 1:1000

Immunogen Information

Gene ID

8778

Swiss Prot

O15389

Immunogen

Recombinant fusion protein containing a sequence corresponding to amino acids 17-434 of human SIGLEC5 (NP_003821.1).

Synonyms

CD170; OBBP2; CD33L2; OB-BP2; SIGLEC-5; SIGLECS

Contact

☎ | 400-999-6126

✉ | cn.market@abclonal.com.cn

🌐 | www.abclonal.com.cn

Product Information

Source

Rabbit

Isotype

IgG

Purification

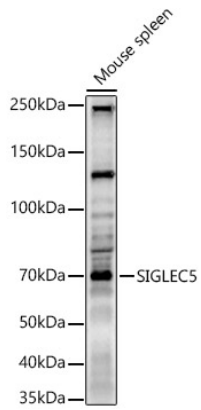
Affinity purification

Storage

Store at -20°C. Avoid freeze / thaw cycles.

Buffer: PBS with 0.01% thimerosal, 50% glycerol, pH7.3.

Validation Data



Western blot analysis of Mouse spleen, using SIGLECS Rabbit pAb (A4250) at 1:800 dilution.
Secondary antibody: HRP Goat Anti-Rabbit IgG (H+L) (AS014) at 1:10000 dilution.
Lysates/proteins: 25µg per lane.
Blocking buffer: 3% nonfat dry milk in TBST.
Detection: ECL Basic Kit (RM00020).
Exposure time: 90s.