

THOC4/ALYREF Rabbit mAb

Catalog No.: A4298 **Recombinant**

Basic Information

Observed MW

32kDa

Calculated MW

27kDa

Category

Primary antibody

Applications

ELISA, WB, IHC-P

Cross-Reactivity

Human, Mouse, Rat

CloneNo number

ARC0959

Background

The protein encoded by this gene is a heat stable, nuclear protein and functions as a molecular chaperone. It is thought to regulate dimerization, DNA binding, and transcriptional activity of basic region-leucine zipper (bZIP) proteins.

Recommended Dilutions

WB	1:500 - 1:1000
IHC-P	1:500 - 1:1000

Immunogen Information

Gene ID

10189

Swiss Prot

Q86V81

Immunogen

A synthetic peptide corresponding to a sequence within amino acids 158-257 of human THOC4/ALYREFREF (Q86V81).

Synonyms

ALY; BEF; REF; THOC4; ALY/REF; THOC4/ALYREF

Contact

 | 400-999-6126

 | cn.market@abclonal.com.cn

 | www.abclonal.com.cn

Product Information

Source

Rabbit

Isotype

IgG

Purification

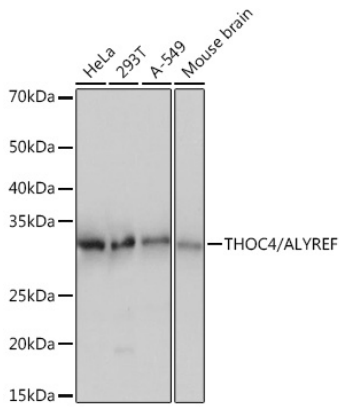
Affinity purification

Storage

Store at -20°C. Avoid freeze / thaw cycles.

Buffer: PBS with 0.02% sodium azide, 0.05% BSA, 50% glycerol, pH7.3.

Validation Data



Western blot analysis of various lysates using THOC4/THOC4/ALYREFREF Rabbit mAb (A4298) at 1:1000 dilution.

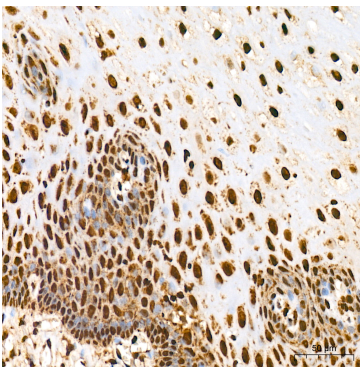
Secondary antibody: HRP Goat Anti-Rabbit IgG (H+L) (AS014) at 1:10000 dilution.

Lysates/proteins: 25µg per lane.

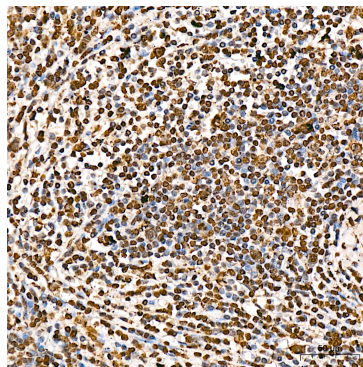
Blocking buffer: 3% nonfat dry milk in TBST.

Detection: ECL Basic Kit (RM00020).

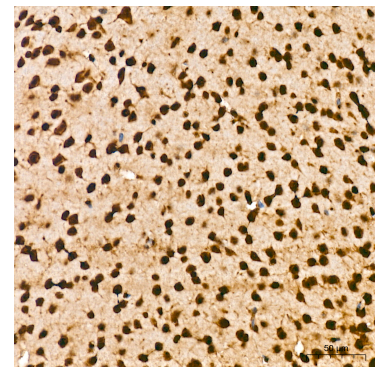
Exposure time: 1s.



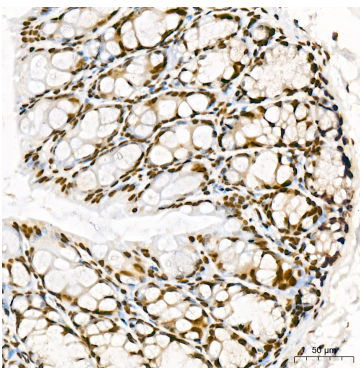
Immunohistochemistry analysis of THOC4/ALYREF in paraffin-embedded human esophagus tissue using THOC4/ALYREF Rabbit mAb (A4298) at a dilution of 1:800 (40x lens). High pressure antigen retrieval was performed with 0.01 M citrate buffer (pH 6.0) prior to IHC staining.



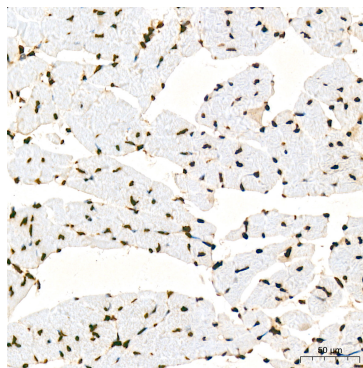
Immunohistochemistry analysis of THOC4/ALYREF in paraffin-embedded human spleen tissue using THOC4/ALYREF Rabbit mAb (A4298) at a dilution of 1:800 (40x lens). High pressure antigen retrieval was performed with 0.01 M citrate buffer (pH 6.0) prior to IHC staining.



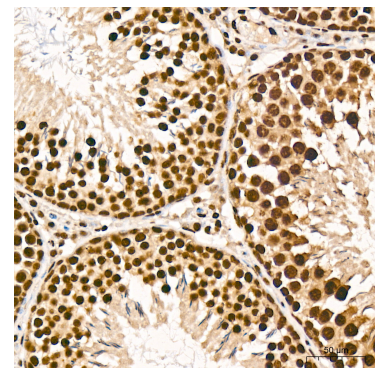
Immunohistochemistry analysis of THOC4/ALYREF in paraffin-embedded mouse brain tissue using THOC4/ALYREF Rabbit mAb (A4298) at a dilution of 1:800 (40x lens). High pressure antigen retrieval was performed with 0.01 M citrate buffer (pH 6.0) prior to IHC staining.



Immunohistochemistry analysis of THOC4/ALYREF in paraffin-embedded mouse colon tissue using THOC4/ALYREF Rabbit mAb (A4298) at a dilution of 1:800 (40x lens). High pressure antigen retrieval was performed with 0.01 M citrate buffer (pH 6.0) prior to IHC staining.



Immunohistochemistry analysis of THOC4/ALYREF in paraffin-embedded mouse heart tissue using THOC4/ALYREF Rabbit mAb (A4298) at a dilution of 1:800 (40x lens). High pressure antigen retrieval was performed with 0.01 M citrate buffer (pH 6.0) prior to IHC staining.



Immunohistochemistry analysis of THOC4/ALYREF in paraffin-embedded rat testis tissue using THOC4/ALYREF Rabbit mAb (A4298) at a dilution of 1:800 (40x lens). High pressure antigen retrieval was performed with 0.01 M citrate buffer (pH 6.0) prior to IHC staining.