

# FAM38A/PIEZO1 Rabbit pAb

Catalog No.: A4340 **1 Publications**

## Basic Information

### Observed MW

286kDa

### Calculated MW

287kDa

### Category

Primary antibody

### Applications

WB,IF/ICC,ELISA

### Cross-Reactivity

Human, Mouse, Rat

## Background

The protein encoded by this gene is a mechanically-activated ion channel that links mechanical forces to biological signals. The encoded protein contains 36 transmembrane domains and functions as a homotetramer. Defects in this gene have been associated with dehydrated hereditary stomatocytosis.

## Recommended Dilutions

**WB** 1:500 - 1:1000

**IF/ICC** 1:50 - 1:200

**ELISA** Recommended starting concentration is 1 µg/mL. Please optimize the concentration based on your specific assay requirements.

## Immunogen Information

### Gene ID

9780

### Swiss Prot

Q92508

### Immunogen

Recombinant fusion protein containing a sequence corresponding to amino acids 2230-2420 of human FAM38A/PIEZO1 (NP\_001136336.2).

### Synonyms

ER; DHS; Mib; LMPH3; FAM38A; LMPHM6; FAM38A/PIEZO1

## Contact

☎ | 400-999-6126

✉ | [cn.market@abclonal.com.cn](mailto:cn.market@abclonal.com.cn)

🌐 | [www.abclonal.com.cn](http://www.abclonal.com.cn)

## Product Information

### Source

Rabbit

### Isotype

IgG

### Purification

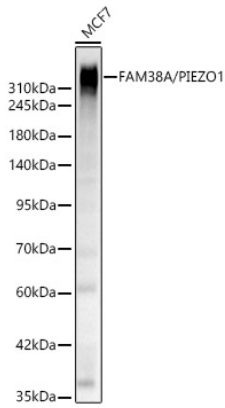
Affinity purification

### Storage

Store at -20°C. Avoid freeze / thaw cycles.

Buffer: PBS with 0.09% Sodium azide,50% glycerol,pH7.3.

## Validation Data



Western blot analysis of lysates from MCF7 cells, using FAM38A/PIEZO1 Rabbit pAb (A4340) at 1:1000 dilution.

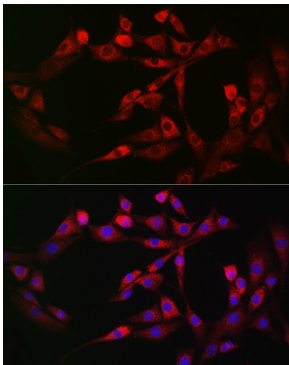
Secondary antibody: HRP-conjugated Goat anti-Rabbit IgG (H+L) (AS014) at 1:10000 dilution.

Lysates/proteins: 25µg per lane.

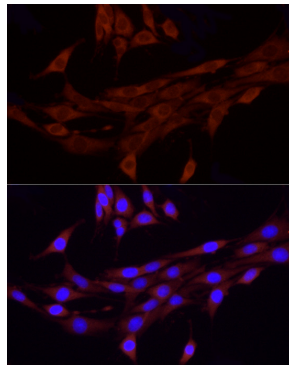
Blocking buffer: 3% nonfat dry milk in TBST.

Detection: ECL Basic Kit (RM00020).

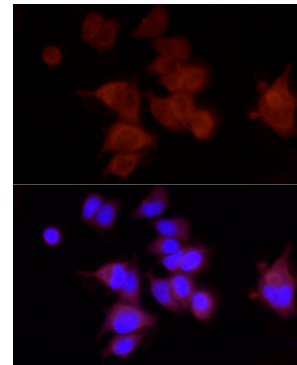
Exposure time: 45s.



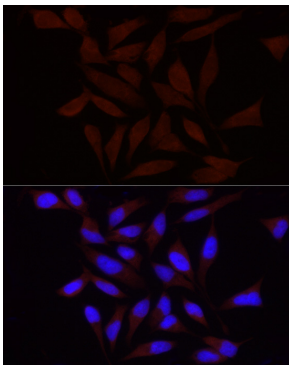
Immunofluorescence analysis of NIH-3T3 cells using FAM38A/PIEZO1 Rabbit pAb (A4340) at dilution of 1:200 (40x lens). Secondary antibody: Cy3-conjugated Goat anti-Rabbit IgG (H+L) (AS007) at 1:500 dilution. Blue: DAPI for nuclear staining.



Immunofluorescence analysis of PC-12 using FAM38A/PIEZO1 Rabbit pAb (A4340) at dilution of 1:100 (40x lens). Blue: DAPI for nuclear staining.



Immunofluorescence analysis of MCF-7 using FAM38A/PIEZO1 Rabbit pAb (A4340) at dilution of 1:100 (40x lens). Blue: DAPI for nuclear staining.



Immunofluorescence analysis of HeLa using FAM38A/PIEZO1 Rabbit pAb (A4340) at dilution of 1:100 (40x lens). Blue: DAPI for nuclear staining.