

# PSA/KLK3 Rabbit mAb

Catalog No.: A4355 **Recombinant**

## Basic Information

**Observed MW**

30kDa

**Calculated MW**

29kDa

**Category**

Primary antibody

**Applications**

ELISA, WB

**Cross-Reactivity**

Human

**CloneNo number**

ARC0976

## Background

Kallikreins are a subgroup of serine proteases having diverse physiological functions. Growing evidence suggests that many kallikreins are implicated in carcinogenesis and some have potential as novel cancer and other disease biomarkers. The gene is one of the fifteen kallikrein subfamily members located in a cluster on chromosome 19. It encodes a single-chain glycoprotein, a protease which is synthesized in the epithelial cells of the prostate gland, and is present in seminal plasma. It is thought to function normally in the liquefaction of seminal coagulum, presumably by hydrolysis of the high molecular mass seminal vesicle protein. The serum level of this protein, called PSA in the clinical setting, is useful in the diagnosis and monitoring of prostatic carcinoma. Alternate splicing of this gene generates several transcript variants encoding different isoforms.

## Recommended Dilutions

WB 1:500 - 1:1000

## Immunogen Information

**Gene ID**

354

**Swiss Prot**

P07288

**Immunogen**

A synthetic peptide corresponding to a sequence within amino acids 162-261 of human PSA/KLK3 (P07288).

**Synonyms**

APS; PSA; hK3; KLK2A1; PSA/KLK3

## Contact

 | 400-999-6126 | [cn.market@abclonal.com.cn](mailto:cn.market@abclonal.com.cn) | [www.abclonal.com.cn](http://www.abclonal.com.cn)

## Product Information

**Source**

Rabbit

**Isotype**

IgG

**Purification**

Affinity purification

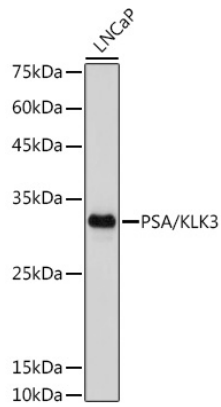
**Storage**

Store at -20°C. Avoid freeze / thaw cycles.

Buffer: PBS with 0.02% sodium azide, 0.05% BSA, 50% glycerol, pH7.3.

## Validation Data

---



Western blot analysis of extracts of LNCaP cells, using PSA/KLK3 antibody (A4355) at 1:1000 dilution.  
Secondary antibody: HRP Goat Anti-Rabbit IgG (H+L) (AS014) at 1:10000 dilution.  
Lysates/proteins: 25µg per lane.  
Blocking buffer: 3% nonfat dry milk in TBST.  
Detection: ECL Basic Kit (RM00020).  
Exposure time: 10s.