

# USH1C Rabbit pAb

Catalog No.: A4368

## Basic Information

### Observed MW

73kDa

### Calculated MW

45kDa/58kDa/60kDa/62kDa/101kDa

### Category

Primary antibody

### Applications

ELISA, WB

### Cross-Reactivity

Human, Mouse, Rat

## Background

Predicted to enable actin filament binding activity. Acts upstream of or within neuron development; startle response; and synapse organization. Predicted to be part of stereocilia ankle link complex. Predicted to be active in several cellular components, including cilium; photoreceptor inner segment; and stereocilium tip. Is expressed in brain; hair cell; pleuroperitoneal region; sensory system; and trunk musculature. Used to study Usher syndrome. Human ortholog(s) of this gene implicated in Usher syndrome; Usher syndrome type 1; Usher syndrome type 1C; and autosomal recessive nonsyndromic deafness 18A. Orthologous to human USH1C (USH1 protein network component harmonin).

## Recommended Dilutions

WB 1:200 - 1:2000

## Immunogen Information

### Gene ID

564412

### Swiss Prot

### Immunogen

Recombinant fusion protein containing a sequence corresponding to amino acids 1-100 of zebrafish USH1C (NP\_001035018.1).

### Synonyms

zgc:136806; USH1C

## Contact

☎ | 400-999-6126

✉ | [cn.market@abclonal.com.cn](mailto:cn.market@abclonal.com.cn)

🌐 | [www.abclonal.com.cn](http://www.abclonal.com.cn)

## Product Information

### Source

Rabbit

### Isotype

IgG

### Purification

Affinity purification

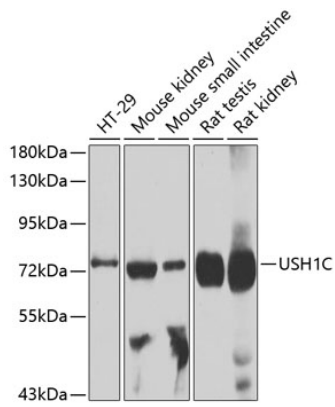
### Storage

Store at -20°C. Avoid freeze / thaw cycles.

Buffer: PBS with 0.02% sodium azide, 50% glycerol, pH7.3.

## Validation Data

---



Western blot analysis of extracts of various cell lines, using USH1C antibody (A4368) at 1:1000 dilution.  
Secondary antibody: HRP Goat Anti-Rabbit IgG (H+L) (AS014) at 1:10000 dilution.  
Lysates/proteins: 25µg per lane.  
Blocking buffer: 3% nonfat dry milk in TBST.  
Detection: ECL Basic Kit (RM00020).  
Exposure time: 90s.