

TRAP1 Rabbit pAb

Catalog No.: A4378

Basic Information

Observed MW

80kDa

Calculated MW

80kDa

Category

Primary antibody

Applications

ELISA, WB, IHC-P, IF/ICC

Cross-Reactivity

Human, Mouse, Rat

Background

This gene encodes a mitochondrial chaperone protein that is member of the heat shock protein 90 (HSP90) family. The encoded protein has ATPase activity and interacts with tumor necrosis factor type I. This protein may function in regulating cellular stress responses. Alternate splicing results in multiple transcript variants.

Recommended Dilutions

WB	1:500 - 1:2000
IHC-P	1:50 - 1:100
IF/ICC	1:50 - 1:100

Immunogen Information

Gene ID

10131

Swiss Prot

Q12931

Immunogen

Recombinant fusion protein containing a sequence corresponding to amino acids 445-704 of human TRAP1 (NP_057376.2).

Synonyms

HSP75; HSP 75; HSP90L; TRAP-1; TRAP1

Contact

 | 400-999-6126

 | cn.market@abclonal.com.cn

 | www.abclonal.com.cn

Product Information

Source

Rabbit

Isotype

IgG

Purification

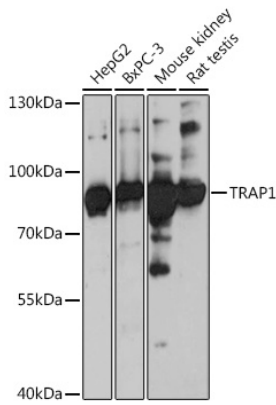
Affinity purification

Storage

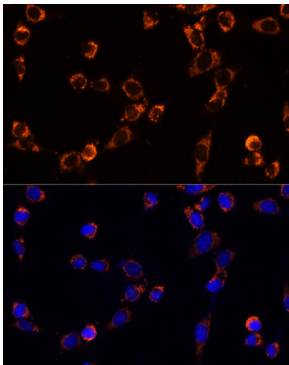
Store at -20°C. Avoid freeze / thaw cycles.

Buffer: PBS with 0.01% thimerosal, 50% glycerol, pH7.3.

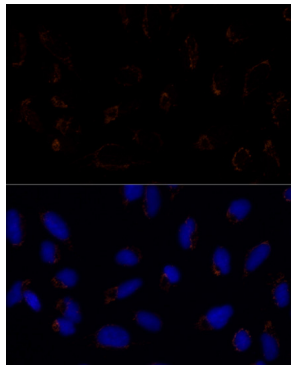
Validation Data



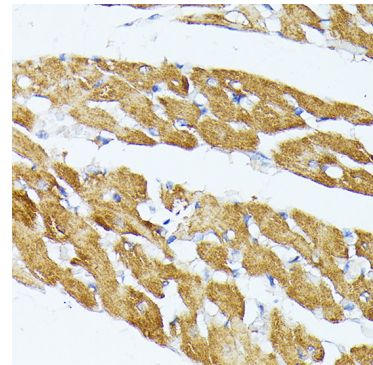
Western blot analysis of various lysates using TRAP1 Rabbit pAb (A4378) at 1:3000 dilution.
Secondary antibody: HRP Goat Anti-Rabbit IgG (H+L) (AS014) at 1:10000 dilution.
Lysates/proteins: 25µg per lane.
Blocking buffer: 3% nonfat dry milk in TBST.
Detection: ECL Basic Kit (RM00020).
Exposure time: 30s.



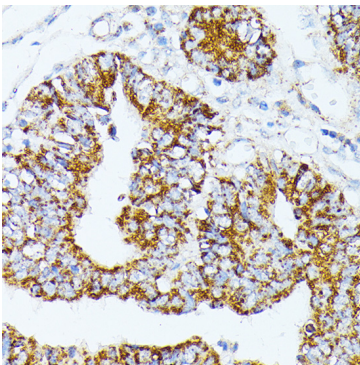
Immunofluorescence analysis of NIH/3T3 cells using TRAP1 Rabbit pAb (A4378) at dilution of 1:100. Blue: DAPI for nuclear staining.



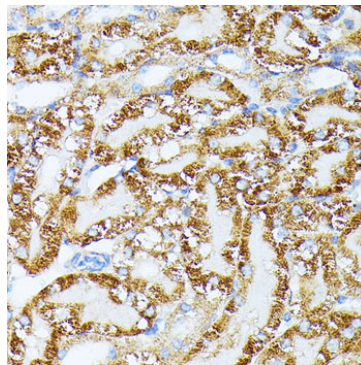
Immunofluorescence analysis of U2OS cells using TRAP1 Rabbit pAb (A4378) at dilution of 1:100. Blue: DAPI for nuclear staining.



Immunohistochemistry analysis of paraffin-embedded Rat brain using TRAP1 Rabbit pAb (A4378) at dilution of 1:100 (40x lens). Perform microwave antigen retrieval with 10 mM PBS buffer pH 7.2 before commencing with IHC staining protocol.



Immunohistochemistry analysis of paraffin-embedded Human colon carcinoma using TRAP1 Rabbit pAb (A4378) at dilution of 1:100 (40x lens). Perform microwave antigen retrieval with 10 mM PBS buffer pH 7.2 before commencing with IHC staining protocol.



Immunohistochemistry analysis of paraffin-embedded Mouse kidney using TRAP1 Rabbit pAb (A4378) at dilution of 1:100 (40x lens). Perform microwave antigen retrieval with 10 mM PBS buffer pH 7.2 before commencing with IHC staining protocol.