

Stathmin 1 Rabbit mAb

Catalog No.: A4379 **Recombinant**

Basic Information

Observed MW

17kDa

Calculated MW

17kDa

Category

Primary antibody

Applications

WB,IF/ICC,IF-P,IHC-P,ELISA

Cross-Reactivity

Human, Mouse, Rat

CloneNo number

ARC0989

Background

This gene belongs to the stathmin family of genes. It encodes a ubiquitous cytosolic phosphoprotein proposed to function as an intracellular relay integrating regulatory signals of the cellular environment. The encoded protein is involved in the regulation of the microtubule filament system by destabilizing microtubules. It prevents assembly and promotes disassembly of microtubules. Multiple transcript variants encoding different isoforms have been found for this gene.

Recommended Dilutions

WB	1:1000 - 1:6000
IF/ICC	1:200 - 800
IF-P	1:200 - 800
IHC-P	1:200 - 1:2000
ELISA	Recommended starting concentration is 1 µg/mL. Please optimize the concentration based on your specific assay requirements.

Contact

☎ | 400-999-6126

✉ | cn.market@abclonal.com.cn

🌐 | www.abclonal.com.cn

Immunogen Information

Gene ID

3925

Swiss Prot

P16949

Immunogen

Synthetic peptide. This information is considered to be commercially sensitive.

Synonyms

Lag; SMN; OP18; PP17; PP19; PR22; LAP18; C1orf215; Stathmin 1

Product Information

Source

Rabbit

Isotype

IgG

Purification

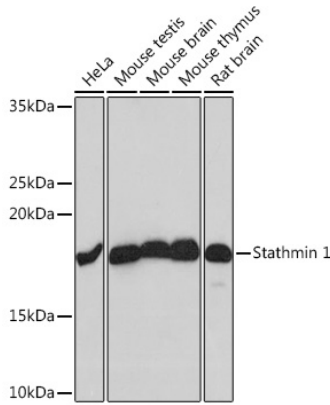
Affinity purification

Storage

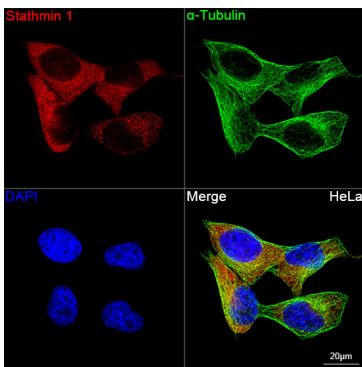
Store at -20°C. Avoid freeze / thaw cycles.

Buffer: PBS with 0.09% Sodium azide,0.05% BSA,50% glycerol,pH7.3.

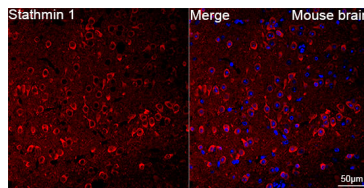
Validation Data



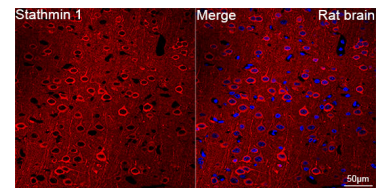
Western blot analysis of various lysates using Stathmin 1 Rabbit mAb (A4379) at 1:1000 dilution. Secondary antibody: HRP-conjugated Goat anti-Rabbit IgG (H+L) (AS014) at 1:10000 dilution. Lysates/proteins: 25µg per lane. Blocking buffer: 3% nonfat dry milk in TBST. Detection: ECL Basic Kit (RM00020). Exposure time: 10s.



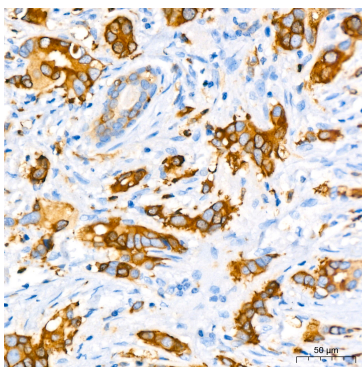
Confocal imaging of HeLa cells using Stathmin 1 Rabbit mAb (A4379, dilution 1:200) followed by a further incubation with Cy3 Goat Anti-Rabbit IgG (H+L) (AS007, dilution 1:500) (Red). The cells were counterstained with α -Tubulin Mouse mAb (AC012, dilution 1:400) followed by incubation with Abflo® 488-conjugated Goat Anti-Mouse IgG (H+L) Ab (AS076, dilution 1:500) (Green). DAPI was used for nuclear staining (Blue). Objective: 100x.



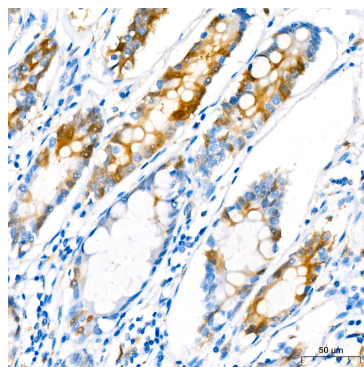
Confocal imaging of paraffin-embedded Mouse brain using Stathmin 1 Rabbit mAb (A4379, dilution 1:200) followed by a further incubation with Cy3 Goat Anti-Rabbit IgG (H+L) (AS007, dilution 1:500) (Red). DAPI was used for nuclear staining (Blue). Objective: 40x. Perform microwave antigen retrieval with 0.01 M citRate buffer (pH 6.0) prior to IF staining.



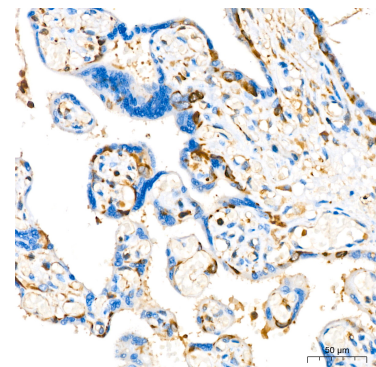
Confocal imaging of paraffin-embedded Rat brain using Stathmin 1 Rabbit mAb (A4379, dilution 1:200) followed by a further incubation with Cy3 Goat Anti-Rabbit IgG (H+L) (AS007, dilution 1:500) (Red). DAPI was used for nuclear staining (Blue). Objective: 40x. Perform microwave antigen retrieval with 0.01 M citRate buffer (pH 6.0) prior to IF staining.



Immunohistochemistry analysis of paraffin-embedded Human breast cancer using Stathmin 1 Rabbit mAb (A4379) at dilution of 1:200 (40x lens). High pressure antigen retrieval performed with 0.01M Citrate buffer (pH 6.0) prior to IHC staining.

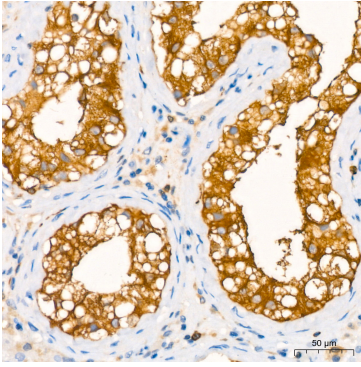


Immunohistochemistry analysis of paraffin-embedded Human colon using Stathmin 1 Rabbit mAb (A4379) at dilution of 1:200 (40x lens). High pressure antigen retrieval performed with 0.01M Citrate buffer (pH 6.0) prior to IHC staining.

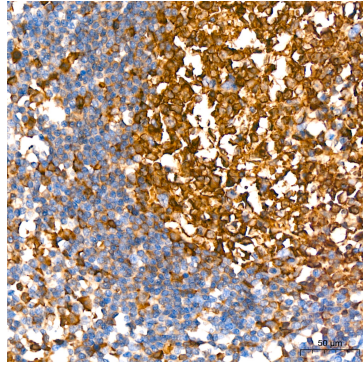


Immunohistochemistry analysis of paraffin-embedded Human placenta using Stathmin 1 Rabbit mAb (A4379) at dilution of 1:200 (40x lens). High pressure antigen retrieval performed with 0.01M Citrate buffer (pH 6.0) prior to IHC staining.

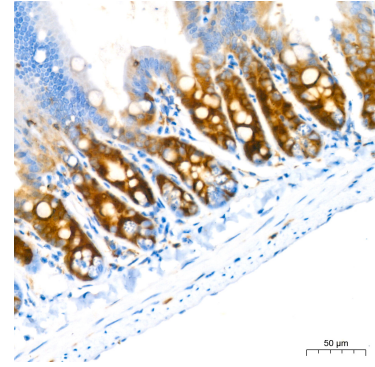
Validation Data



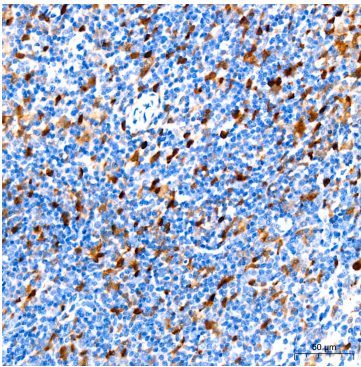
Immunohistochemistry analysis of paraffin-embedded Human testis using Stathmin 1 Rabbit mAb (A4379) at dilution of 1:200 (40x lens). High pressure antigen retrieval performed with 0.01M Citrate buffer (pH 6.0) prior to IHC staining.



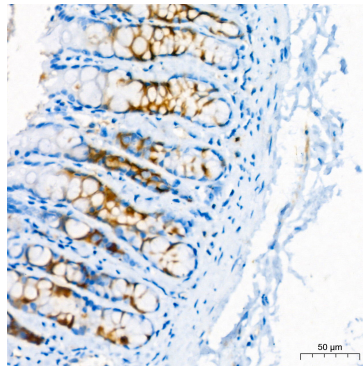
Immunohistochemistry analysis of paraffin-embedded Human tonsil using Stathmin 1 Rabbit mAb (A4379) at dilution of 1:200 (40x lens). High pressure antigen retrieval performed with 0.01M Citrate buffer (pH 6.0) prior to IHC staining.



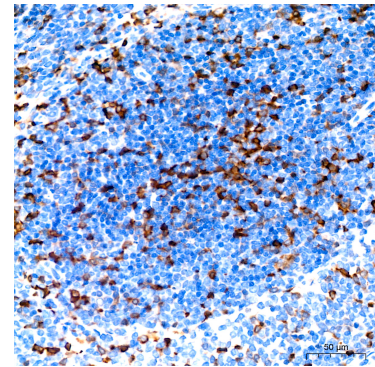
Immunohistochemistry analysis of paraffin-embedded Mouse intestine using Stathmin 1 Rabbit mAb (A4379) at dilution of 1:200 (40x lens). High pressure antigen retrieval performed with 0.01M Citrate buffer (pH 6.0) prior to IHC staining.



Immunohistochemistry analysis of paraffin-embedded Mouse spleen using Stathmin 1 Rabbit mAb (A4379) at dilution of 1:200 (40x lens). High pressure antigen retrieval performed with 0.01M Citrate buffer (pH 6.0) prior to IHC staining.



Immunohistochemistry analysis of paraffin-embedded Rat colon using Stathmin 1 Rabbit mAb (A4379) at dilution of 1:200 (40x lens). High pressure antigen retrieval performed with 0.01M Citrate buffer (pH 6.0) prior to IHC staining.



Immunohistochemistry analysis of paraffin-embedded Rat spleen using Stathmin 1 Rabbit mAb (A4379) at dilution of 1:200 (40x lens). High pressure antigen retrieval performed with 0.01M Citrate buffer (pH 6.0) prior to IHC staining.