

CLEC3B/Tetranectin Rabbit mAb

Catalog No.: A4387 **Recombinant** **1 Publications**

Basic Information

Observed MW

23-25kDa

Calculated MW

21kDa

Category

Primary antibody

Applications

ELISA,WB,IF/ICC

Cross-Reactivity

Human, Mouse, Rat

CloneNo number

ARC0993

Background

Enables calcium ion binding activity; heparin binding activity; and kringle domain binding activity. Involved in bone mineralization and cellular response to transforming growth factor beta stimulus. Located in cytoplasm; extracellular space; and granular component. Part of collagen-containing extracellular matrix. Implicated in osteoarthritis.

Recommended Dilutions

WB 1:500 - 1:2000

IF/ICC 1:50 - 1:200

Immunogen Information

Gene ID

7123

Swiss Prot

P05452

Immunogen

A synthetic peptide corresponding to a sequence within amino acids 103-202 of human CLEC3B/Tetranectin (P05452).

Synonyms

TN; TNA; MCDR4; CLEC3B/Tetranectin

Contact

☎ | 400-999-6126

✉ | cn.market@abclonal.com.cn

🌐 | www.abclonal.com.cn

Product Information

Source

Rabbit

Isotype

IgG

Purification

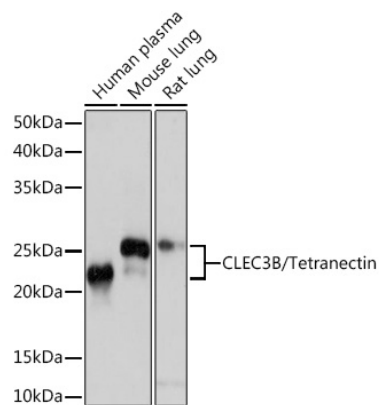
Affinity purification

Storage

Store at -20°C. Avoid freeze / thaw cycles.

Buffer: PBS with 0.02% sodium azide,0.05% BSA,50% glycerol,pH7.3.

Validation Data



Western blot analysis of extracts of various cell lines, using CLEC3B/CLEC3B/Tetranectin Rabbit mAb (A4387) at 1:1000 dilution.

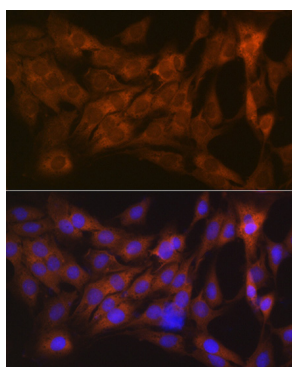
Secondary antibody: HRP Goat Anti-Rabbit IgG (H+L) (AS014) at 1:10000 dilution.

Lysates/proteins: 25µg per lane.

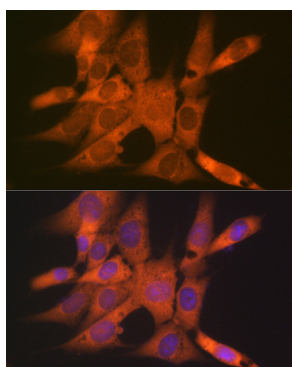
Blocking buffer: 3% nonfat dry milk in TBST.

Detection: ECL Basic Kit (RM00020).

Exposure time: 10s.



Immunofluorescence analysis of C6 cells using CLEC3B/CLEC3B/Tetranectin Rabbit mAb (A4387) at dilution of 1:100 (40x lens). Blue: DAPI for nuclear staining.



Immunofluorescence analysis of NIH-3T3 cells using CLEC3B/CLEC3B/Tetranectin Rabbit mAb (A4387) at dilution of 1:100 (40x lens). Blue: DAPI for nuclear staining.