

# AP2A1 Rabbit mAb

Catalog No.: A4403

Recombinant

1 Publications

## Basic Information

### Observed MW

100-108kDa

### Calculated MW

108kDa

### Category

Primary antibody

### Applications

ELISA,WB,IF/ICC

### Cross-Reactivity

Human, Mouse, Rat

### CloneNo number

ARC0998

## Background

This gene encodes the alpha 1 adaptin subunit of the adaptor protein 2 (AP-2) complex found in clathrin coated vesicles. The AP-2 complex is a heterotetramer consisting of two large adaptins (alpha or beta), a medium adaptin (mu), and a small adaptin (sigma). The complex is part of the protein coat on the cytoplasmic face of coated vesicles which links clathrin to receptors in vesicles. Alternative splicing of this gene results in two transcript variants encoding two different isoforms. A third transcript variant has been described, but its full length nature has not been determined.

## Recommended Dilutions

WB 1:500 - 1:1000

IF/ICC 1:50 - 1:200

## Immunogen Information

### Gene ID

160

### Swiss Prot

O95782

### Immunogen

Recombinant fusion protein containing a sequence corresponding to amino acids 1-100 of human AP2A1 (O95782).

### Synonyms

ADTAA; CLAPA1; AP2-ALPHA; AP2A1

## Contact

☎ | 400-999-6126

✉ | [cn.market@abclonal.com.cn](mailto:cn.market@abclonal.com.cn)

🌐 | [www.abclonal.com.cn](http://www.abclonal.com.cn)

## Product Information

### Source

Rabbit

### Isotype

IgG

### Purification

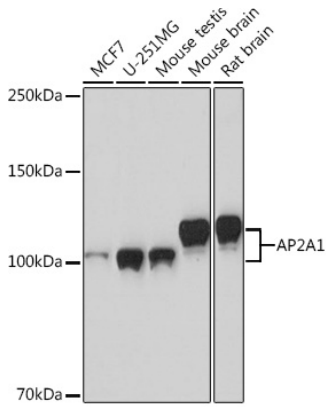
Affinity purification

### Storage

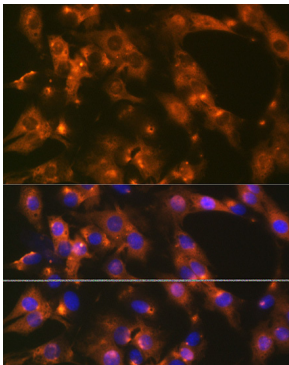
Store at -20°C. Avoid freeze / thaw cycles.

Buffer: PBS with 0.02% sodium azide,0.05% BSA,50% glycerol,pH7.3.

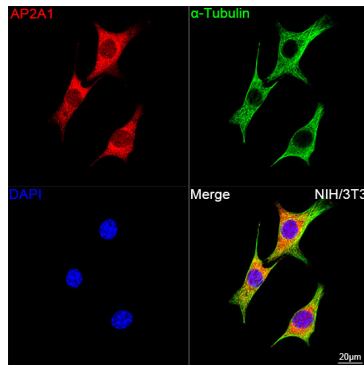
## Validation Data



Western blot analysis of various lysates using AP2A1 Rabbit mAb (A4403) at 1:1000 dilution. Secondary antibody: HRP Goat Anti-Rabbit IgG (H+L) (AS014) at 1:10000 dilution. Lysates/proteins: 25µg per lane. Blocking buffer: 3% nonfat dry milk in TBST. Detection: ECL Basic Kit (RM00020). Exposure time: 90s.



Immunofluorescence analysis of C6 cells using AP2A1 Rabbit mAb (A4403) at dilution of 1:100 (40x lens). Secondary antibody: Cy3 Goat Anti-Rabbit IgG (H+L) (AS007) at 1:500 dilution. Blue: DAPI for nuclear staining.



Confocal imaging of NIH/3T3 cells using AP2A1 Rabbit mAb (A4403, dilution 1:100) followed by a further incubation with Cy3 Goat Anti-Rabbit IgG (H+L) (AS007, dilution 1:500) (Red). The cells were counterstained with  $\alpha$ -Tubulin Mouse mAb (AC012, dilution 1:400) followed by incubation with ABflo® 488-conjugated Goat Anti-Mouse IgG (H+L) Ab (AS076, dilution 1:500) (Green). DAPI was used for nuclear staining (Blue). Objective: 100x.