

# [KO Validated] CRMP2/DPYSL2 Rabbit mAb

Catalog No.: A4411 **KO Validated** **Recombinant** **1 Publications**

## Basic Information

### Observed MW

62kDa

### Calculated MW

62kDa

### Category

Primary antibody

### Applications

ELISA, WB, IF/ICC

### Cross-Reactivity

Human, Mouse, Rat

### CloneNo number

ARC1123

## Background

This gene encodes a member of the collapsin response mediator protein family. Collapsin response mediator proteins form homo- and hetero-tetramers and facilitate neuron guidance, growth and polarity. The encoded protein promotes microtubule assembly and is required for Sema3A-mediated growth cone collapse, and also plays a role in synaptic signaling through interactions with calcium channels. This gene has been implicated in multiple neurological disorders, and hyperphosphorylation of the encoded protein may play a key role in the development of Alzheimer's disease. Alternatively spliced transcript variants encoding multiple isoforms have been observed for this gene.

## Recommended Dilutions

<b>WB</b>	1:500 - 1:5000
<b>IF/ICC</b>	1:50 - 1:200

## Immunogen Information

### Gene ID

1808

### Swiss Prot

Q16555

### Immunogen

A synthetic peptide corresponding to a sequence within amino acids 473-572 of human CRMP2/DPYSL2 (Q16555).

### Synonyms

DRP2; N2A3; CRMP2; DRP-2; ULIP2; CRMP-2; DHPRP2; ULIP-2; L2

## Contact

 | 400-999-6126 | [cn.market@abclonal.com.cn](mailto:cn.market@abclonal.com.cn) | [www.abclonal.com.cn](http://www.abclonal.com.cn)

## Product Information

### Source

Rabbit

### Isotype

IgG

### Purification

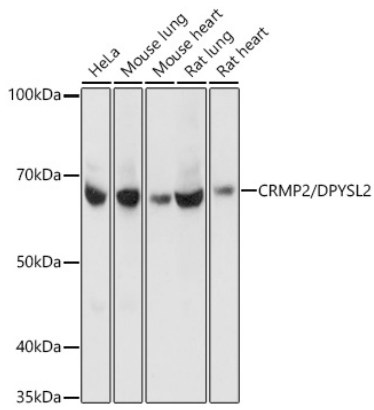
Affinity purification

### Storage

Store at -20°C. Avoid freeze / thaw cycles.

Buffer: PBS with 0.02% sodium azide, 0.05% BSA, 50% glycerol, pH7.3.

## Validation Data



Western blot analysis of extracts of various cell lines, using CRMP2/DPYSL2 Rabbit mAb (A4411) at 1:1000 dilution.

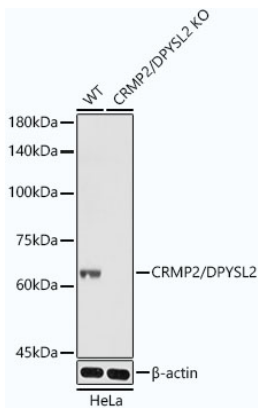
Secondary antibody: HRP Goat Anti-Rabbit IgG (H+L) (AS014) at 1:10000 dilution.

Lysates/proteins: 25µg per lane.

Blocking buffer: 3% nonfat dry milk in TBST.

Detection: ECL Basic Kit (RM00020).

Exposure time: 3s.



Western blot analysis of extracts from wild type (WT) and CRMP2/DPYSL2 knockout (KO) HeLa cells, using CRMP2/DPYSL2 antibody (A4411) at 1:3000 dilution.

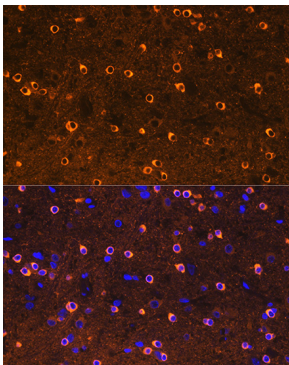
Secondary antibody: HRP Goat Anti-Rabbit IgG (H+L) (AS014) at 1:10000 dilution.

Lysates/proteins: 25µg per lane.

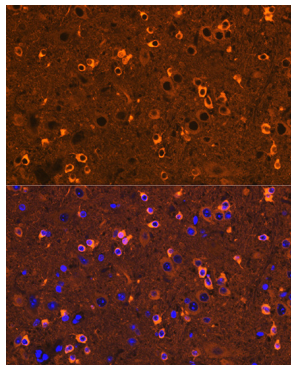
Blocking buffer: 3% nonfat dry milk in TBST.

Detection: ECL Basic Kit (RM00020).

Exposure time: 1s.



Immunofluorescence analysis of rat brain using CRMP2/DPYSL2 Rabbit mAb (A4411) at dilution of 1:100 (40x lens). Blue: DAPI for nuclear staining.



Immunofluorescence analysis of mouse brain using CRMP2/DPYSL2 Rabbit mAb (A4411) at dilution of 1:100 (40x lens). Blue: DAPI for nuclear staining.