

NUMA1 Rabbit mAb

Catalog No.: A4416 **Recombinant**

Basic Information

Observed MW

250kDa

Calculated MW

238kDa

Category

Primary antibody

Applications

ELISA, WB, IHC-P

Cross-Reactivity

Human, Mouse, Rat

CloneNo number

ARC1000

Background

This gene encodes a large protein that forms a structural component of the nuclear matrix. The encoded protein interacts with microtubules and plays a role in the formation and organization of the mitotic spindle during cell division. Chromosomal translocation of this gene with the RARA (retinoic acid receptor, alpha) gene on chromosome 17 have been detected in patients with acute promyelocytic leukemia. Alternative splicing results in multiple transcript variants.

Recommended Dilutions

WB	1:500 - 1:2000
IHC-P	1:50 - 1:200

Immunogen Information

Gene ID

4926

Swiss Prot

Q14980

Immunogen

A synthetic peptide corresponding to a sequence within amino acids 2000-2100 of human NUMA1 (Q14980).

Synonyms

NUMA; NMP-22; NUMA1

Contact

 | 400-999-6126

 | cn.market@abclonal.com.cn

 | www.abclonal.com.cn

Product Information

Source

Rabbit

Isotype

IgG

Purification

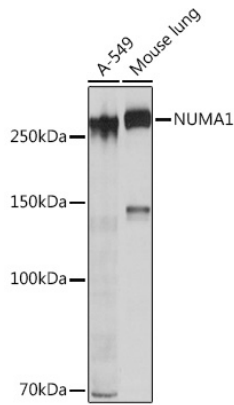
Affinity purification

Storage

Store at -20°C. Avoid freeze / thaw cycles.

Buffer: PBS with 0.02% sodium azide, 0.05% BSA, 50% glycerol, pH7.3.

Validation Data



Western blot analysis of extracts of various cell lines, using NUMA11 Rabbit mAb (A4416) at 1:1000 dilution.

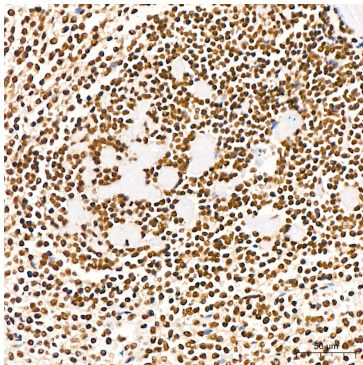
Secondary antibody: HRP Goat Anti-Rabbit IgG (H+L) (AS014) at 1:10000 dilution.

Lysates/proteins: 25µg per lane.

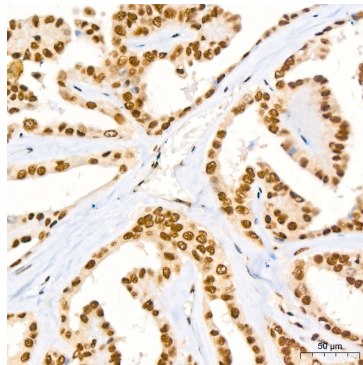
Blocking buffer: 3% nonfat dry milk in TBST.

Detection: ECL Basic Kit (RM00020).

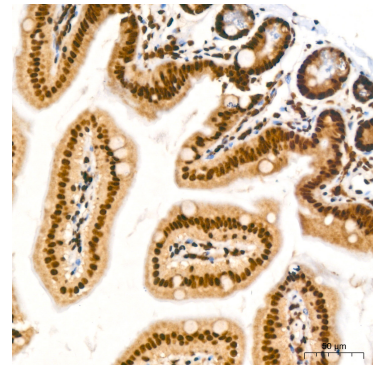
Exposure time: 10s.



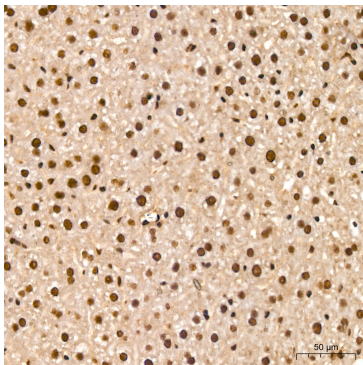
Immunohistochemistry analysis of NUMA1 in paraffin-embedded human spleen tissue using NUMA1 Rabbit mAb (A4416) at a dilution of 1:200 (40x lens). High pressure antigen retrieval was performed with 0.01 M citrate buffer (pH 6.0) prior to IHC staining.



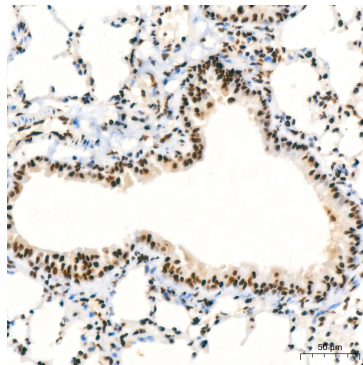
Immunohistochemistry analysis of NUMA1 in paraffin-embedded human thyroid cancer tissue using NUMA1 Rabbit mAb (A4416) at a dilution of 1:200 (40x lens). High pressure antigen retrieval was performed with 0.01 M citrate buffer (pH 6.0) prior to IHC staining.



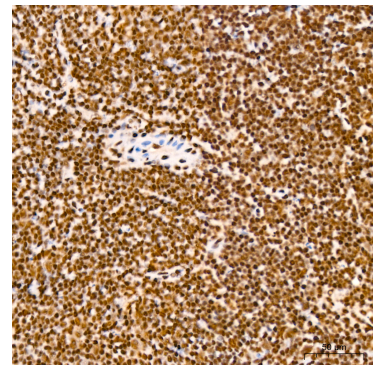
Immunohistochemistry analysis of NUMA1 in paraffin-embedded mouse intestine tissue using NUMA1 Rabbit mAb (A4416) at a dilution of 1:200 (40x lens). High pressure antigen retrieval was performed with 0.01 M citrate buffer (pH 6.0) prior to IHC staining.



Immunohistochemistry analysis of NUMA1 in paraffin-embedded mouse liver tissue using NUMA1 Rabbit mAb (A4416) at a dilution of 1:200 (40x lens). High pressure antigen retrieval was performed with 0.01 M citrate buffer (pH 6.0) prior to IHC staining.

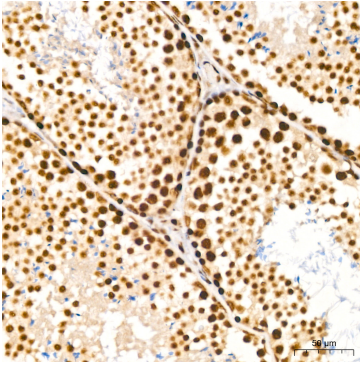


Immunohistochemistry analysis of NUMA1 in paraffin-embedded mouse lung tissue using NUMA1 Rabbit mAb (A4416) at a dilution of 1:200 (40x lens). High pressure antigen retrieval was performed with 0.01 M citrate buffer (pH 6.0) prior to IHC staining.

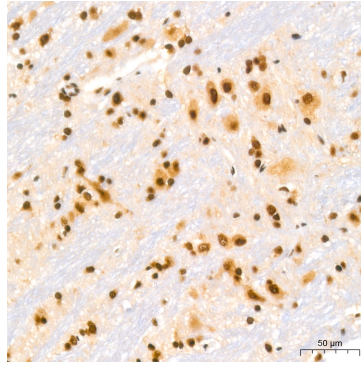


Immunohistochemistry analysis of NUMA1 in paraffin-embedded mouse spleen tissue using NUMA1 Rabbit mAb (A4416) at a dilution of 1:200 (40x lens). High pressure antigen retrieval was performed with 0.01 M citrate buffer (pH 6.0) prior to IHC staining.

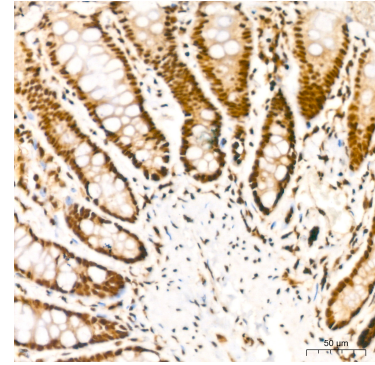
Validation Data



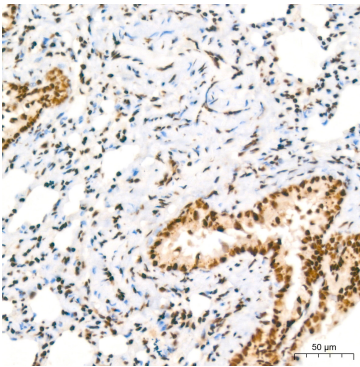
Immunohistochemistry analysis of NUMA1 in paraffin-embedded mouse testis tissue using NUMA1 Rabbit mAb (A4416) at a dilution of 1:200 (40x lens). High pressure antigen retrieval was performed with 0.01 M citrate buffer (pH 6.0) prior to IHC staining.



Immunohistochemistry analysis of NUMA1 in paraffin-embedded rat brain tissue using NUMA1 Rabbit mAb (A4416) at a dilution of 1:200 (40x lens). High pressure antigen retrieval was performed with 0.01 M citrate buffer (pH 6.0) prior to IHC staining.



Immunohistochemistry analysis of NUMA1 in paraffin-embedded rat colon tissue using NUMA1 Rabbit mAb (A4416) at a dilution of 1:200 (40x lens). High pressure antigen retrieval was performed with 0.01 M citrate buffer (pH 6.0) prior to IHC staining.



Immunohistochemistry analysis of NUMA1 in paraffin-embedded rat lung tissue using NUMA1 Rabbit mAb (A4416) at a dilution of 1:200 (40x lens). High pressure antigen retrieval was performed with 0.01 M citrate buffer (pH 6.0) prior to IHC staining.