

[KO Validated] KAT1/HAT1 Rabbit mAb

Catalog No.: A4423

KO Validated

Recombinant

1 Publications

Basic Information

Observed MW

49 kDa

Calculated MW

50 kDa

Category

Primary antibody

Applications

WB, IP, IHC-P, IF/ICC, ELISA

Cross-Reactivity

Human, Mouse, Rat

CloneNo number

ARC1002

Background

The protein encoded by this gene is a type B histone acetyltransferase (HAT) that is involved in the rapid acetylation of newly synthesized cytoplasmic histones, which are in turn imported into the nucleus for de novo deposition onto nascent DNA chains. Histone acetylation, particularly of histone H4, plays an important role in replication-dependent chromatin assembly. Specifically, this HAT can acetylate soluble but not nucleosomal histone H4 at lysines 5 and 12, and to a lesser degree, histone H2A at lysine 5. Alternatively spliced transcript variants have been identified for this gene.

Recommended Dilutions

WB 1:1000 - 1:4000**IP** 0.5µg-4µg antibody for
200µg-400µg extracts of
whole cells**IHC-P** 1:50 - 1:200**IF/ICC** 1:50 - 1:200**ELISA** Recommended starting
concentration is 1 µg/mL.
Please optimize the
concentration based on
your specific assay
requirements.

Immunogen Information

Gene ID

8520

Swiss Prot

O14929

Immunogen

Recombinant protein (or fragment). This information is considered to be commercially sensitive.

Synonyms

KAT1; KAT1/HAT1

Product Information

Source

Rabbit

Isotype

IgG

Purification

Affinity purification

Storage

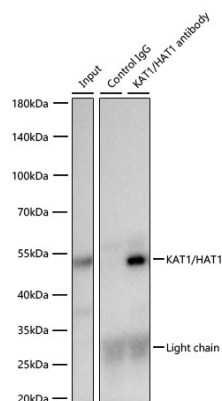
Store at -20°C. Avoid freeze / thaw cycles.

Buffer: PBS containing 50% glycerol and 0.05% BSA, preserved with proclin300 or sodium azide (as specified on the Certificate of Analysis), pH 7.3.

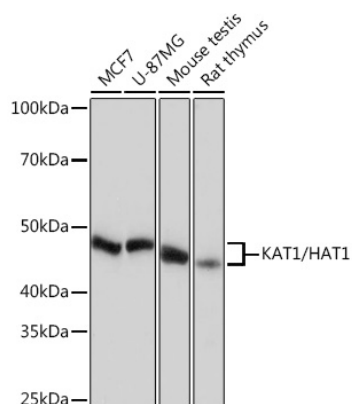
Contact

 | 400-999-6126 | cn.market@abclonal.com.cn | www.abclonal.com.cn

Validation Data



Immunoprecipitation of KAT1/HAT1 from 300 µg extracts of MCF7 cells was performed using 2 µg of [KO Validated] KAT1/HAT1 Rabbit mAb (A4423). Rabbit Control IgG (AC005) was used to precipitate the Control IgG sample. IP samples were eluted with 1X Laemmli Buffer. The Input lane represents 10% of the total input. Western blot analysis of immunoprecipitates was conducted using [KO Validated] KAT1/HAT1 Rabbit mAb (A4423) at a dilution of 1:1500.



Western blot analysis of various lysates using [KO Validated] KAT1/HAT1 Rabbit mAb (A4423) at 1:1000 dilution.

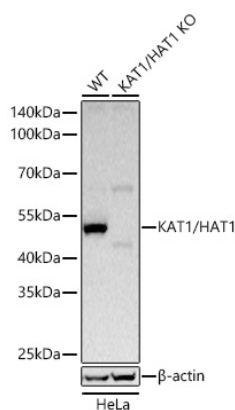
Secondary antibody: HRP-conjugated Goat anti-Rabbit IgG (H+L) (AS014) at 1:10000 dilution.

Lysates/proteins: 25 µg per lane.

Blocking buffer: 3% nonfat dry milk in TBST.

Detection: ECL Basic Kit (RM00020).

Exposure time: 10 s.



Western blot analysis of lysates from wild type (WT) and KAT1/HAT1 knockout (KO) HeLa cells using KAT1/HAT1 Rabbit mAb (A4423) at 1:1000 dilution incubated at room temperature for 1.5 hours.

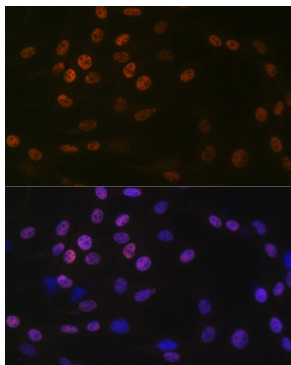
Secondary antibody: HRP-conjugated Goat anti-Rabbit IgG (H+L) (AS014) at 1:10000 dilution.

Lysates/proteins: 25 µg per lane.

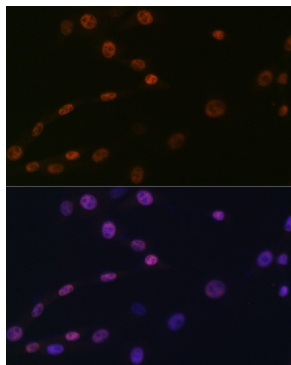
Blocking buffer: 3% nonfat dry milk in TBST.

Detection: ECL Basic Kit (RM00020).

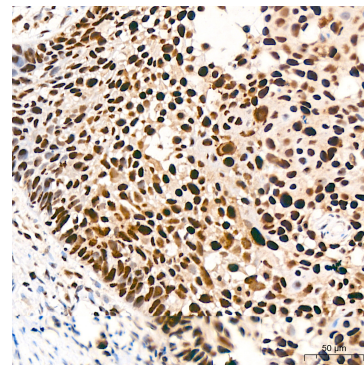
Exposure time: 1 s.



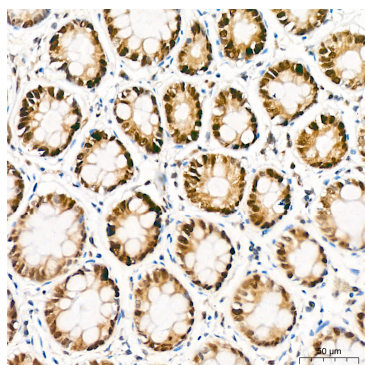
Immunofluorescence analysis of C6 cells using [KO Validated] KAT1/HAT1 Rabbit mAb (A4423) at dilution of 1:100 (40x lens). Secondary antibody: Cy3-conjugated Goat anti-Rabbit IgG (H+L) (AS007) at 1:500 dilution. Blue: DAPI for nuclear staining.



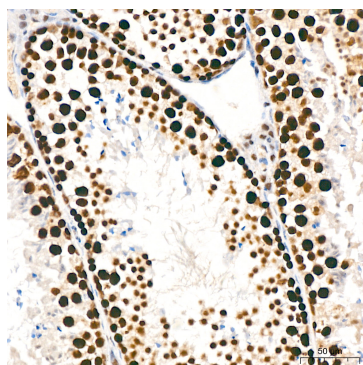
Immunofluorescence analysis of NIH/3T3 cells using [KO Validated] KAT1/HAT1 Rabbit mAb (A4423) at dilution of 1:100 (40x lens). Secondary antibody: Cy3-conjugated Goat anti-Rabbit IgG (H+L) (AS007) at 1:500 dilution. Blue: DAPI for nuclear staining.



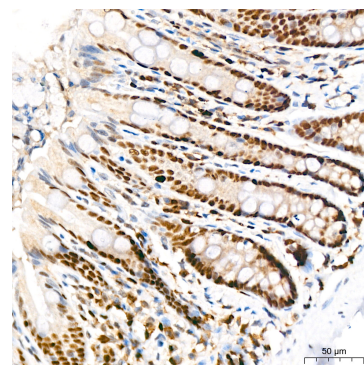
Immunohistochemistry analysis of paraffin-embedded Human cervix cancer tissue using [KO Validated] KAT1/HAT1 Rabbit mAb (A4423) at a dilution of 1:200 (40x lens). High pressure antigen retrieval performed with 0.01M Citrate buffer (pH 6.0) prior to IHC staining.



Immunohistochemistry analysis of paraffin-embedded Human colon tissue using [KO Validated] KAT1/HAT1 Rabbit mAb (A4423) at a dilution of 1:200 (40x lens). High pressure antigen retrieval performed with 0.01M Citrate buffer (pH 6.0) prior to IHC staining.



Immunohistochemistry analysis of paraffin-embedded Mouse testis tissue using [KO Validated] KAT1/HAT1 Rabbit mAb (A4423) at a dilution of 1:200 (40x lens). High pressure antigen retrieval performed with 0.01M Citrate buffer (pH 6.0) prior to IHC staining.



Immunohistochemistry analysis of paraffin-embedded Rat colon tissue using [KO Validated] KAT1/HAT1 Rabbit mAb (A4423) at a dilution of 1:200 (40x lens). High pressure antigen retrieval performed with 0.01M Citrate buffer (pH 6.0) prior to IHC staining.