

Thioredoxin 2 (Trx2/TXN2) Rabbit mAb

Catalog No.: A4424

Recombinant

2 Publications

Basic Information

Observed MW

13kDa

Calculated MW

18kDa

Category

Primary antibody

Applications

WB, IF/ICC, ELISA

Cross-Reactivity

Human, Mouse, Rat

CloneNo number

ARC1003

Background

This nuclear gene encodes a mitochondrial member of the thioredoxin family, a group of small multifunctional redox-active proteins. The encoded protein may play important roles in the regulation of the mitochondrial membrane potential and in protection against oxidant-induced apoptosis.

Recommended Dilutions

WB 1:500 - 1:2000

IF/ICC 1:50 - 1:200

ELISA Recommended starting concentration is 1 µg/mL. Please optimize the concentration based on your specific assay requirements.

Immunogen Information

Gene ID

25828

Swiss Prot

Q99757

Immunogen

Synthetic peptide. This information is considered to be commercially sensitive.

Synonyms

TXN; MTRX; TRX2; MT-TRX; COXPD29; Thioredoxin 2 (Trx2/TXN2)

Contact

☎ | 400-999-6126

✉ | cn.market@abclonal.com.cn

🌐 | www.abclonal.com.cn

Product Information

Source

Rabbit

Isotype

IgG

Purification

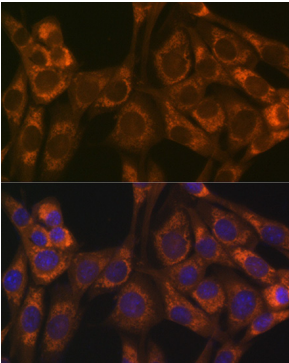
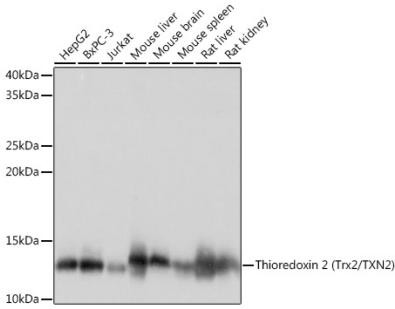
Affinity purification

Storage

Store at -20°C. Avoid freeze / thaw cycles.

Buffer: PBS with 0.02% sodium azide, 0.05% BSA, 50% glycerol, pH7.3.

Validation Data



Immunofluorescence analysis of NIH-3T3 cells using Thioredoxin 2 (Trx2/TXN2) (Trx2/TXN2) Rabbit mAb (A4424) at dilution of 1:100 (40x lens). Secondary antibody: Cy3-conjugated Goat anti-Rabbit IgG (H+L) (AS007) at 1:500 dilution. Blue: DAPI for nuclear staining.