

CCT8 Rabbit pAb

Catalog No.: A4449

1 Publications

Basic Information

Observed MW

60kDa

Calculated MW

60kDa

Category

Primary antibody

Applications

ELISA, WB, IHC-P

Cross-Reactivity

Human, Mouse, Rat

Background

This gene encodes the theta subunit of the CCT chaperonin, which is abundant in the eukaryotic cytosol and may be involved in the transport and assembly of newly synthesized proteins. Alternative splicing results in multiple transcript variants of this gene. A pseudogene related to this gene is located on chromosome 1.

Recommended Dilutions

WB 1:1000 - 1:2000

IHC-P 1:50 - 1:200

Immunogen Information

Gene ID

10694

Swiss Prot

P50990

Immunogen

Recombinant fusion protein containing a sequence corresponding to amino acids 248-497 of human CCT8 (NP_001269837.1).

Synonyms

Cctq; PRED71; D21S246; C21orf112; CCT8

Contact

☎ | 400-999-6126

✉ | cn.market@abclonal.com.cn

🌐 | www.abclonal.com.cn

Product Information

Source

Rabbit

Isotype

IgG

Purification

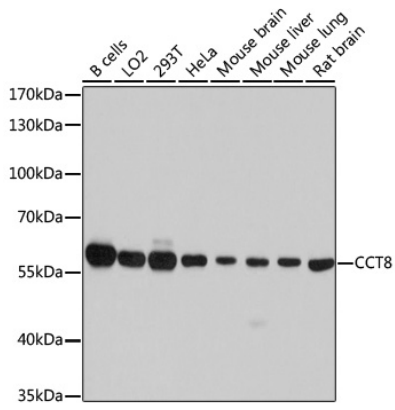
Affinity purification

Storage

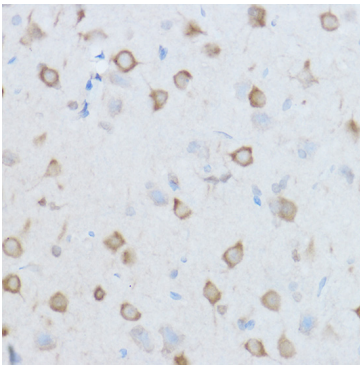
Store at -20°C. Avoid freeze / thaw cycles.

Buffer: PBS with 0.02% sodium azide, 50% glycerol, pH 7.3.

Validation Data



Western blot analysis of various lysates using CCT8 Rabbit pAb (A4449) at 1:7000 dilution.
Secondary antibody: HRP Goat Anti-Rabbit IgG (H+L) (AS014) at 1:10000 dilution.
Lysates/proteins: 25µg per lane.
Blocking buffer: 3% nonfat dry milk in TBST.
Detection: ECL Basic Kit (RM00020).
Exposure time: 5s.



Immunohistochemistry analysis of paraffin-embedded Mouse brain using CCT8 Rabbit pAb (A4449) at dilution of 1:100 (40x lens). Perform high pressure antigen retrieval with 10 mM citrate buffer pH 6.0 before commencing with IHC staining protocol.