

# RAB10 Rabbit pAb

Catalog No.: A4459 **1 Publications**

## Basic Information

### Observed MW

23kDa

### Calculated MW

23kDa

### Category

Primary antibody

### Applications

ELISA, WB

### Cross-Reactivity

Mouse

## Background

RAB10 belongs to the RAS (see HRAS; MIM 190020) superfamily of small GTPases. RAB proteins localize to exocytic and endocytic compartments and regulate intracellular vesicle trafficking (Bao et al., 1998 [PubMed 9918381]).

## Recommended Dilutions

WB 1:500 - 1:2000

## Immunogen Information

### Gene ID

10890

### Swiss Prot

P61026

### Immunogen

Recombinant fusion protein containing a sequence corresponding to amino acids 98-198 of human RAB10 (NP\_057215.3).

### Synonyms

RAB10

## Contact

 | 400-999-6126

 | [cn.market@abclonal.com.cn](mailto:cn.market@abclonal.com.cn)

 | [www.abclonal.com.cn](http://www.abclonal.com.cn)

## Product Information

### Source

Rabbit

### Isotype

IgG

### Purification

Affinity purification

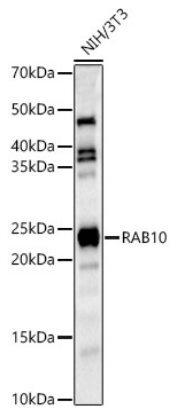
### Storage

Store at -20°C. Avoid freeze / thaw cycles.

Buffer: PBS with 0.02% sodium azide, 50% glycerol, pH 7.3.

## Validation Data

---



Western blot analysis of NIH/3T3, using RAB10 Rabbit pAb (A4459) at 1:1000 dilution.  
Secondary antibody: HRP Goat Anti-Rabbit IgG (H+L) (AS014) at 1:10000 dilution.  
Lysates/proteins: 25µg per lane.  
Blocking buffer: 3% nonfat dry milk in TBST.  
Detection: ECL Basic Kit (RM00020).  
Exposure time: 30s.