

SLC38A3 Rabbit pAb

Catalog No.: A4472 **1 Publications**

Basic Information

Observed MW

60kDa

Calculated MW

56kDa

Category

Primary antibody

Applications

ELISA, WB

Cross-Reactivity

Human, Mouse, Rat

Background

Enables L-amino acid transmembrane transporter activity. Involved in amino acid transport. Located in plasma membrane.

Recommended Dilutions

WB 1:500 - 1:2000

Immunogen Information

Gene ID

10991

Swiss Prot

Q99624

Immunogen

Recombinant fusion protein containing a sequence corresponding to amino acids 1-65 of human SLC38A3 (NP_006832.1).

Synonyms

G17; SN1; NAT1; SNAT3; DEE102; SLC38A3

Contact

 | 400-999-6126

 | cn.market@abclonal.com.cn

 | www.abclonal.com.cn

Product Information

Source

Rabbit

Isotype

IgG

Purification

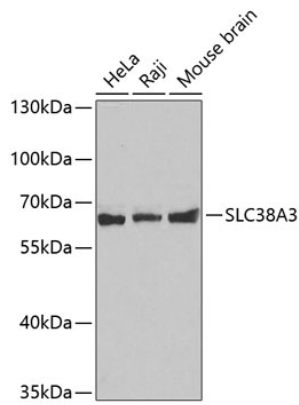
Affinity purification

Storage

Store at -20°C. Avoid freeze / thaw cycles.

Buffer: PBS with 0.01% thimerosal, 50% glycerol, pH7.3.

Validation Data



Western blot analysis of various lysates using SLC38A3 Rabbit pAb (A4472).
Secondary antibody: HRP Goat Anti-Rabbit IgG (H+L) (AS014) at 1:10000 dilution.
Lysates/proteins: 25µg per lane.
Blocking buffer: 3% nonfat dry milk in TBST.