

ADAP1 Rabbit pAb

Catalog No.: A4479

Basic Information

Observed MW

43kDa

Calculated MW

43kDa

Category

Primary antibody

Applications

ELISA, WB, IF/ICC

Cross-Reactivity

Human, Mouse, Rat

Background

Enables GTPase activator activity. Involved in regulation of GTPase activity. Located in cytosol; nucleus; and plasma membrane.

Recommended Dilutions

WB 1:500 - 1:2000

IF/ICC 1:50 - 1:200

Immunogen Information

Gene ID

11033

Swiss Prot

O75689

Immunogen

Recombinant fusion protein containing a sequence corresponding to amino acids 1-374 of human ADAP1 (NP_006860.1).

Synonyms

GCS1L; CENTA1; p42IP4; ADAP1

Contact

☎ | 400-999-6126

✉ | cn.market@abclonal.com.cn

🌐 | www.abclonal.com.cn

Product Information

Source

Rabbit

Isotype

IgG

Purification

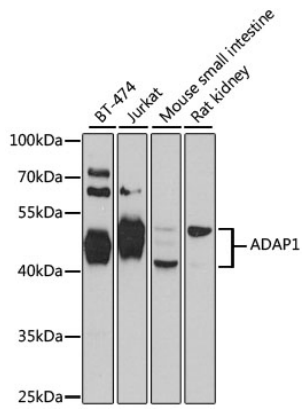
Affinity purification

Storage

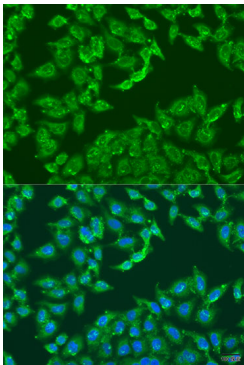
Store at -20°C. Avoid freeze / thaw cycles.

Buffer: PBS with 0.02% sodium azide, 50% glycerol, pH 7.3.

Validation Data



Western blot analysis of extracts of various cell lines, using ADAP1 antibody (A4479) at 1:1000 dilution.
Secondary antibody: HRP Goat Anti-Rabbit IgG (H+L) (AS014) at 1:10000 dilution.
Lysates/proteins: 25µg per lane.
Blocking buffer: 3% nonfat dry milk in TBST.
Detection: ECL Basic Kit (RM00020).
Exposure time: 30s.



Immunofluorescence analysis of U2OS cells using ADAP1 antibody (A4479) at dilution of 1:100. Blue: DAPI for nuclear staining.