

# RAPGEF4 Rabbit pAb

Catalog No.: A4484

## Basic Information

### Observed MW

115kDa

### Calculated MW

116kDa

### Category

Primary antibody

### Applications

ELISA, WB

### Cross-Reactivity

Human, Mouse, Rat

## Background

Enables guanyl-nucleotide exchange factor activity. Predicted to be involved in regulation of neurotransmitter receptor localization to postsynaptic specialization membrane and regulation of postsynapse organization. Predicted to act upstream of or within adenylate cyclase-activating G protein-coupled receptor signaling pathway; regulation of exocytosis; and secretion by cell. Predicted to be located in plasma membrane. Predicted to be active in glutamatergic synapse; hippocampal mossy fiber to CA3 synapse; and postsynaptic density. Implicated in autistic disorder.

## Recommended Dilutions

WB 1:500 - 1:2000

## Immunogen Information

### Gene ID

11069

### Swiss Prot

Q8WZA2

### Immunogen

Recombinant fusion protein containing a sequence corresponding to amino acids 1-210 of human RAPGEF4 (NP\_001093867.1).

### Synonyms

EPAC; CGEF2; EPAC2; EPAC 2; Nbla00496; CAMP-GEFII; RAPGEF4

## Contact

 | 400-999-6126

 | [cn.market@abclonal.com.cn](mailto:cn.market@abclonal.com.cn)

 | [www.abclonal.com.cn](http://www.abclonal.com.cn)

## Product Information

### Source

Rabbit

### Isotype

IgG

### Purification

Affinity purification

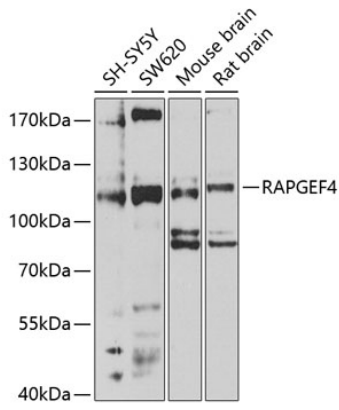
### Storage

Store at -20°C. Avoid freeze / thaw cycles.

Buffer: PBS with 0.02% sodium azide, 50% glycerol, pH 7.3.

## Validation Data

---



Western blot analysis of extracts of various cell lines, using RAPGEF4 antibody (A4484) at 1:1000 dilution.  
Secondary antibody: HRP Goat Anti-Rabbit IgG (H+L) (AS014) at 1:10000 dilution.  
Lysates/proteins: 25µg per lane.  
Blocking buffer: 3% nonfat dry milk in TBST.  
Detection: ECL Enhanced Kit (RM00021).  
Exposure time: 30s.