

KRR1 Rabbit pAb

Catalog No.: A4487

Basic Information

Observed MW

44kDa

Calculated MW

44kDa

Category

Primary antibody

Applications

WB,IF/ICC,ELISA

Cross-Reactivity

Human, Mouse, Rat

Background

Enables RNA binding activity. Predicted to be involved in rRNA processing. Located in chromosome; intercellular bridge; and nuclear lumen.

Recommended Dilutions

WB 1:500 - 1:2000

IF/ICC 1:50 - 1:200

ELISA Recommended starting concentration is 1 µg/mL. Please optimize the concentration based on your specific assay requirements.

Immunogen Information

Gene ID

11103

Swiss Prot

Q13601

Immunogen

Recombinant protein (or fragment). This information is considered to be commercially sensitive.

Synonyms

HRB2; RIP-1; KRR1

Contact

 | 400-999-6126

 | cn.market@abclonal.com.cn

 | www.abclonal.com.cn

Product Information

Source

Rabbit

Isotype

IgG

Purification

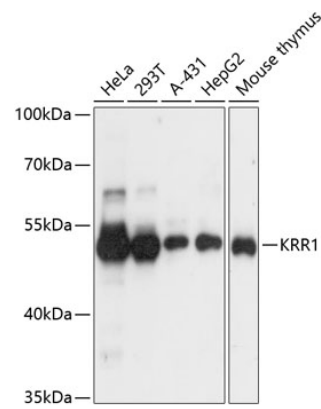
Affinity purification

Storage

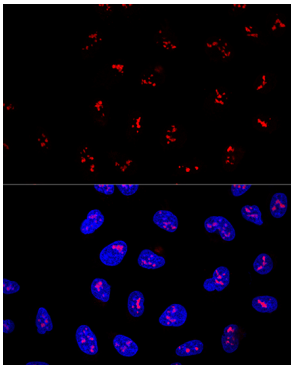
Store at -20°C. Avoid freeze / thaw cycles.

Buffer: PBS with 0.01% thimerosal, 50% glycerol, pH 7.3.

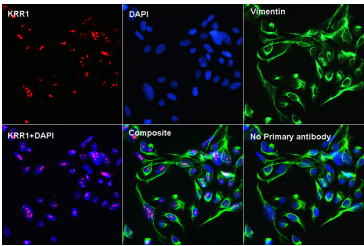
Validation Data



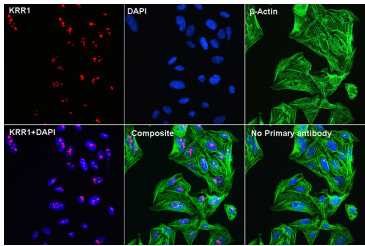
Western blot analysis of various lysates using KRR1 Rabbit pAb (A4487) at 1:3000 dilution.
Secondary antibody: HRP-conjugated Goat anti-Rabbit IgG (H+L) (AS014) at 1:10000 dilution.
Lysates/proteins: 25µg per lane.
Blocking buffer: 3% nonfat dry milk in TBST.
Detection: ECL Basic Kit (RM00020).
Exposure time: 1s.



Confocal immunofluorescence analysis of U2OS cells using KRR1 Rabbit pAb (A4487) at dilution of 1:100. Blue: DAPI for nuclear staining.



Confocal Immunofluorescent analysis of U2OS cells using KRR1 Rabbit pAb (A4487) at dilution of 1:100 (40x lens)(red). Vimentin (A19607: Vimentin Rabbit mAb) for Cytoskeleton staining(green), DAPI for nuclear staining(blue).



Confocal Immunofluorescent analysis of U2OS cells using KRR1 Rabbit pAb (A4487) at dilution of 1:100 (40x lens)(red). β-Actin (AC004: ACTB Mouse mAb) for Cytoskeleton staining(green), DAPI for nuclear staining(blue).