

STAT4 Rabbit mAb

Catalog No.: A4523 **Recombinant** **2 Publications**

Basic Information

Observed MW

86kDa

Calculated MW

86kDa

Category

Primary antibody

Applications

ELISA, WB, IF/ICC, IP

Cross-Reactivity

Human, Mouse, Rat

CloneNo number

ARC1071

Background

The protein encoded by this gene is a member of the STAT family of transcription factors. In response to cytokines and growth factors, STAT family members are phosphorylated by the receptor associated kinases, and then form homo- or heterodimers that translocate to the cell nucleus where they act as transcription activators. This protein is essential for mediating responses to IL12 in lymphocytes, and regulating the differentiation of T helper cells. Mutations in this gene may be associated with systemic lupus erythematosus and rheumatoid arthritis. Alternate splicing results in multiple transcript variants that encode the same protein.

Recommended Dilutions

WB 1:500 - 1:1000

IF/ICC 1:50 - 1:200

IP 0.5µg-4µg antibody for
200µg-400µg extracts of
whole cells

Immunogen Information

Gene ID

6775

Swiss Prot

Q14765

Immunogen

A synthetic peptide corresponding to a sequence within amino acids 649-748 of human STAT4 (NP_003142.1).

Synonyms

SLEB11; STAT4

Contact

☎ | 400-999-6126

✉ | cn.market@abclonal.com.cn

🌐 | www.abclonal.com.cn

Product Information

Source

Rabbit

Isotype

IgG

Purification

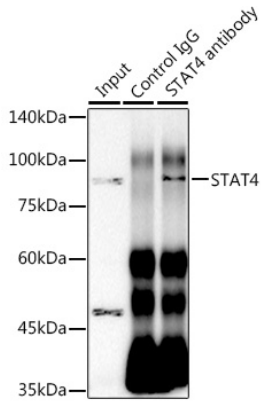
Affinity purification

Storage

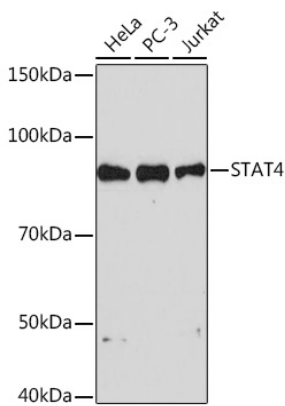
Store at -20°C. Avoid freeze / thaw cycles.

Buffer: PBS with 0.02% sodium azide, 0.05% BSA, 50% glycerol, pH7.3.

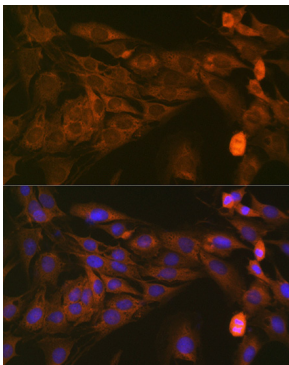
Validation Data



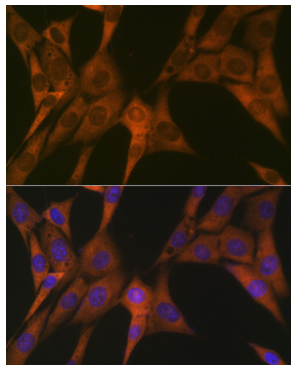
Immunoprecipitation analysis of 300 µg extracts of HeLa cells using 3 µg STAT4 antibody (A4523). Western blot was performed from the immunoprecipitate using STAT4 antibody (A4523) at a dilution of 1:1000.



Western blot analysis of various lysates using STAT4 Rabbit mAb (A4523) at 1:1000 dilution. Secondary antibody: HRP Goat Anti-Rabbit IgG (H+L) (AS014) at 1:10000 dilution. Lysates/proteins: 25µg per lane. Blocking buffer: 3% nonfat dry milk in TBST. Detection: ECL Basic Kit (RM00020). Exposure time: 90s.



Immunofluorescence analysis of C6 cells using STAT4 Rabbit mAb (A4523) at dilution of 1:100 (40x lens). Secondary antibody: Cy3 Goat Anti-Rabbit IgG (H+L) (AS007) at 1:500 dilution. Blue: DAPI for nuclear staining.



Immunofluorescence analysis of NIH-3T3 cells using STAT4 Rabbit mAb (A4523) at dilution of 1:100 (40x lens). Secondary antibody: Cy3 Goat Anti-Rabbit IgG (H+L) (AS007) at 1:500 dilution. Blue: DAPI for nuclear staining.