

ERP44 Rabbit pAb

Catalog No.: A4526

1 Publications

Basic Information

Observed MW

40-48kDa

Calculated MW

47kDa

Category

Primary antibody

Applications

ELISA, WB

Cross-Reactivity

Human, Mouse, Rat

Background

This gene encodes a member of the protein disulfide isomerase (PDI) family of endoplasmic reticulum (ER) proteins. It has an inferred N-terminal signal peptide, a catalytically active thioredoxin (TRX) domain, two TRX-like domains and a C-terminal ER-retention sequence. This protein functions as a pH-regulated chaperone of the secretory pathway and likely plays a role in protein quality control at the endoplasmic reticulum - Golgi interface.

Recommended Dilutions

WB 1:500 - 1:2000

Immunogen Information

Gene ID

23071

Swiss Prot

Q9BS26

Immunogen

Recombinant fusion protein containing a sequence corresponding to amino acids 57-406 of human ERP44 (NP_055866.1).

Synonyms

PDIA10; TXNDC4; ERP44

Contact

☎ | 400-999-6126

✉ | cn.market@abclonal.com.cn

🌐 | www.abclonal.com.cn

Product Information

Source

Rabbit

Isotype

IgG

Purification

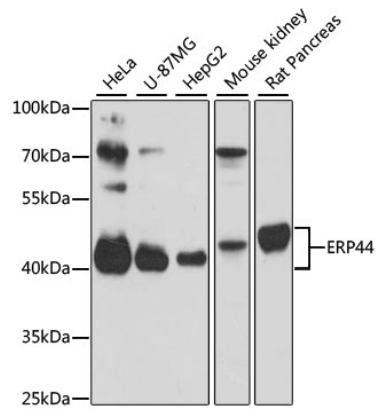
Affinity purification

Storage

Store at -20°C. Avoid freeze / thaw cycles.

Buffer: PBS with 0.01% thimerosal, 50% glycerol, pH7.3.

Validation Data



Western blot analysis of various lysates using ERP44 Rabbit pAb (A4526) at 1:3000 dilution.
Secondary antibody: HRP Goat Anti-Rabbit IgG (H+L) (AS014) at 1:10000 dilution.
Lysates/proteins: 25µg per lane.
Blocking buffer: 3% nonfat dry milk in TBST.
Detection: ECL Basic Kit (RM00020).
Exposure time: 30s.