

# RAR $\beta$ Rabbit mAb

Catalog No.: A4535

Recombinant

## Basic Information

**Observed MW**

55kDa

**Calculated MW**

50kDa

**Category**

Primary antibody

**Applications**

WB,IF/ICC,ELISA

**Cross-Reactivity**

Human, Mouse

**CloneNo number**

ARC1024

## Background

This gene encodes retinoic acid receptor beta, a member of the thyroid-steroid hormone receptor superfamily of nuclear transcriptional regulators. This receptor localizes to the cytoplasm and to subnuclear compartments. It binds retinoic acid, the biologically active form of vitamin A which mediates cellular signalling in embryonic morphogenesis, cell growth and differentiation. It is thought that this protein limits growth of many cell types by regulating gene expression. The gene was first identified in a hepatocellular carcinoma where it flanks a hepatitis B virus integration site. Alternate promoter usage and differential splicing result in multiple transcript variants.

## Recommended Dilutions

**WB** 1:1000 - 1:4000**IF/ICC** 1:50 - 1:200**ELISA** Recommended starting concentration is 1  $\mu$ g/mL. Please optimize the concentration based on your specific assay requirements.

## Immunogen Information

**Gene ID**

5915

**Swiss Prot**

P10826

**Immunogen**

A synthetic peptide corresponding to a sequence within amino acids 350-455 of human RAR $\beta$  (NP\_000956.2).

**Synonyms**HAP; RRB2; NR1B2; MCOPS12; RARbeta; RARbeta1; RAR $\beta$ 

## Contact

 | 400-999-6126 | [cn.market@abclonal.com.cn](mailto:cn.market@abclonal.com.cn) | [www.abclonal.com.cn](http://www.abclonal.com.cn)

## Product Information

**Source**

Rabbit

**Isotype**

IgG

**Purification**

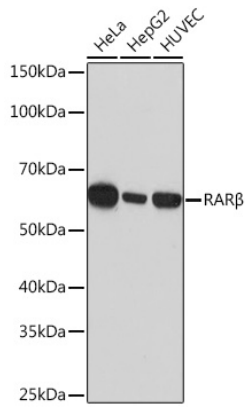
Affinity purification

**Storage**

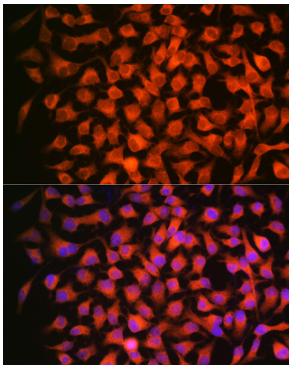
Store at -20°C. Avoid freeze / thaw cycles.

Buffer: PBS with 0.02% sodium azide,0.05% BSA,50% glycerol,pH7.3.

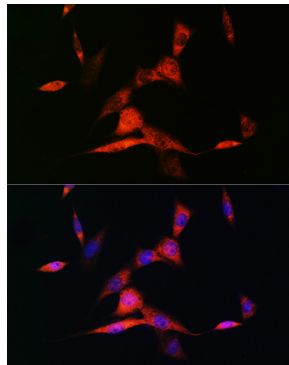
## Validation Data



Western blot analysis of various lysates using RAR $\beta$  Rabbit mAb (A4535) at 1:1000 dilution.  
Secondary antibody: HRP-conjugated Goat anti-Rabbit IgG (H+L) (AS014) at 1:10000 dilution.  
Lysates/proteins: 25 $\mu$ g per lane.  
Blocking buffer: 3% nonfat dry milk in TBST.  
Detection: ECL Basic Kit (RM00020).  
Exposure time: 30s.



Immunofluorescence analysis of HeLa cells using RAR $\beta$  Rabbit mAb (A4535) at dilution of 1:100 (40x lens). Secondary antibody: Cy3-conjugated Goat anti-Rabbit IgG (H+L) (AS007) at 1:500 dilution. Blue: DAPI for nuclear staining.



Immunofluorescence analysis of NIH-3T3 cells using RAR $\beta$  Rabbit mAb (A4535) at dilution of 1:100 (40x lens). Secondary antibody: Cy3-conjugated Goat anti-Rabbit IgG (H+L) (AS007) at 1:500 dilution. Blue: DAPI for nuclear staining.