

CSTF2T Rabbit pAb

Catalog No.: A4540

Basic Information

Observed MW

70kDa

Calculated MW

64kDa

Category

Primary antibody

Applications

ELISA, WB, IF/ICC

Cross-Reactivity

Human, Mouse

Background

Enables RNA binding activity. Predicted to be involved in pre-mRNA cleavage required for polyadenylation. Located in nucleoplasm.

Recommended Dilutions

WB 1:1000 - 1:2000

IF/ICC 1:50 - 1:200

Immunogen Information

Gene ID

23283

Swiss Prot

Q9H0L4

Immunogen

Recombinant fusion protein containing a sequence corresponding to amino acids 420-560 of human CSTF2T (NP_056050.1).

Synonyms

CstF-64T; CSTF2T

Contact

☎ | 400-999-6126

✉ | cn.market@abclonal.com.cn

🌐 | www.abclonal.com.cn

Product Information

Source

Rabbit

Isotype

IgG

Purification

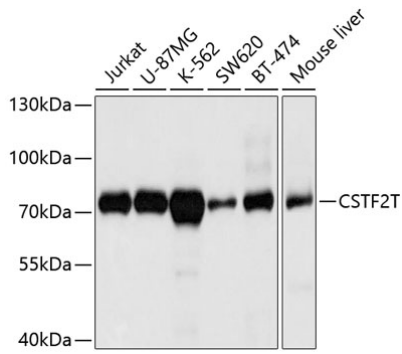
Affinity purification

Storage

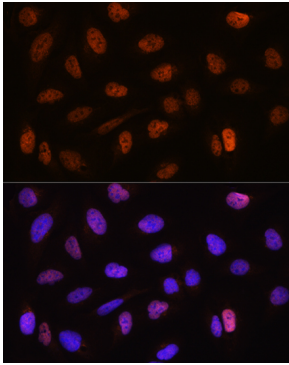
Store at -20°C. Avoid freeze / thaw cycles.

Buffer: PBS with 0.02% sodium azide, 50% glycerol, pH7.3.

Validation Data



Western blot analysis of extracts of various cell lines, using CSTF2T antibody (A4540) at 1:1000 dilution.
Secondary antibody: HRP Goat Anti-Rabbit IgG (H+L) (AS014) at 1:10000 dilution.
Lysates/proteins: 25µg per lane.
Blocking buffer: 3% nonfat dry milk in TBST.
Detection: ECL Basic Kit (RM00020).
Exposure time: 15s.



Immunofluorescence analysis of U2OS cells using CSTF2T Rabbit pAb (A4540) at dilution of 1:100. Blue: DAPI for nuclear staining.