

LARP1 Rabbit pAb

Catalog No.: A4543

Basic Information

Observed MW

163kDa

Calculated MW

124kDa

Category

Primary antibody

Applications

ELISA, WB

Cross-Reactivity

Human

Background

Enables eukaryotic initiation factor 4E binding activity; nucleic acid binding activity; and ribosomal small subunit binding activity. Involved in several processes, including TORC1 signaling; cellular response to rapamycin; and posttranscriptional regulation of gene expression. Located in cytoplasmic stress granule. Colocalizes with TORC1 complex and polysomal ribosome.

Recommended Dilutions

WB 1:500 - 1:2000

Immunogen Information

Gene ID

23367

Swiss Prot

Q6PKG0

Immunogen

Recombinant fusion protein containing a sequence corresponding to amino acids 106-205 of human LARP1 (Q6PKG0).

Synonyms

LARP; Lar1; Lhp1; LARP1

Contact

 | 400-999-6126

 | cn.market@abclonal.com.cn

 | www.abclonal.com.cn

Product Information

Source

Rabbit

Isotype

IgG

Purification

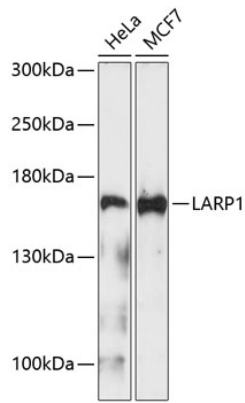
Affinity purification

Storage

Store at -20°C. Avoid freeze / thaw cycles.

Buffer: PBS with 0.02% sodium azide, 50% glycerol, pH 7.3.

Validation Data



Western blot analysis of extracts of various cell lines, using LARP1 Antibody (A4543) at 1:1000 dilution.
Secondary antibody: HRP Goat Anti-Rabbit IgG (H+L) (AS014) at 1:10000 dilution.
Lysates/proteins: 25µg per lane.
Blocking buffer: 3% nonfat dry milk in TBST.
Detection: ECL Enhanced Kit (RM00021).
Exposure time: 90s.