

NCAPH Rabbit pAb

Catalog No.: A4548

Basic Information

Observed MW

85kDa

Calculated MW

83kDa

Category

Primary antibody

Applications

ELISA, WB, IF/ICC

Cross-Reactivity

Human

Background

This gene encodes a member of the barr gene family and a regulatory subunit of the condensin complex. This complex is required for the conversion of interphase chromatin into condensed chromosomes. The protein encoded by this gene is associated with mitotic chromosomes, except during the early phase of chromosome condensation. During interphase, the protein has a distinct punctate nucleolar localization. Alternatively spliced transcript variants encoding different proteins have been described.

Recommended Dilutions

WB 1:500 - 1:5000

IF/ICC 1:50 - 1:200

Immunogen Information

Gene ID

23397

Swiss Prot

Q15003

Immunogen

Recombinant fusion protein containing a sequence corresponding to amino acids 1-250 of human NCAPH (NP_056156.2).

Synonyms

CAPH; BRRN1; CAP-H; MCPH23; NCAPH

Contact

☎ | 400-999-6126

✉ | cn.market@abclonal.com.cn

🌐 | www.abclonal.com.cn

Product Information

Source

Rabbit

Isotype

IgG

Purification

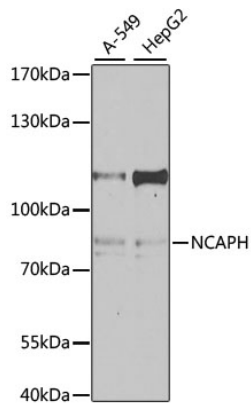
Affinity purification

Storage

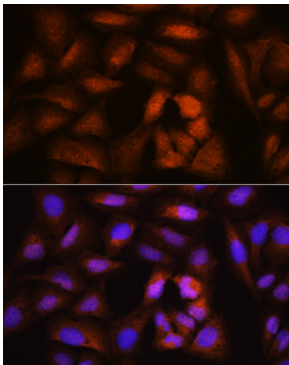
Store at -20°C. Avoid freeze / thaw cycles.

Buffer: PBS with 0.02% sodium azide, 50% glycerol, pH 7.3.

Validation Data



Western blot analysis of extracts of various cell lines, using NCAPH antibody (A4548) at 1:1000 dilution.
Secondary antibody: HRP Goat Anti-Rabbit IgG (H+L) (AS014) at 1:10000 dilution.
Lysates/proteins: 25µg per lane.
Blocking buffer: 3% nonfat dry milk in TBST.
Detection: ECL Enhanced Kit (RM00021).
Exposure time: 60s.



Immunofluorescence analysis of U2OS cells using NCAPH Rabbit pAb (A4548) at dilution of 1:100. Blue: DAPI for nuclear staining.