

PISD Rabbit pAb

Catalog No.: A4580

Basic Information

Observed MW

50kDa

Calculated MW

47kDa

Category

Primary antibody

Applications

ELISA, WB

Cross-Reactivity

Human, Mouse

Background

The protein encoded by this gene catalyzes the conversion of phosphatidylserine to phosphatidylethanolamine in the inner mitochondrial membrane. The encoded protein is active in phospholipid metabolism and interorganelle trafficking of phosphatidylserine.

Recommended Dilutions

WB 1:500 - 1:2000

Immunogen Information

Gene ID

23761

Swiss Prot

Q9UG56

Immunogen

Recombinant fusion protein containing a sequence corresponding to amino acids 1-375 of human PISD (NP_055153.1).

Synonyms

PSD; LIBF; PSDC; PSSC; DJ858B16; dj858B16.2; PISD

Contact

☎ | 400-999-6126

✉ | cn.market@abclonal.com.cn

🌐 | www.abclonal.com.cn

Product Information

Source

Rabbit

Isotype

IgG

Purification

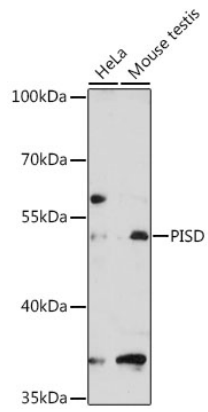
Affinity purification

Storage

Store at -20°C. Avoid freeze / thaw cycles.

Buffer: PBS with 0.01% thimerosal, 50% glycerol, pH7.3.

Validation Data



Western blot analysis of various lysates using PISD Rabbit pAb (A4580) at 1:3000 dilution.
Secondary antibody: HRP Goat Anti-Rabbit IgG (H+L) (AS014) at 1:10000 dilution.
Lysates/proteins: 25µg per lane.
Blocking buffer: 3% nonfat dry milk in TBST.
Detection: ECL Basic Kit (RM00020).
Exposure time: 90s.