

EML2 Rabbit pAb

Catalog No.: A4581

Basic Information

Observed MW

71kDa

Calculated MW

71kDa

Category

Primary antibody

Applications

ELISA, WB

Cross-Reactivity

Human, Mouse

Background

Enables microtubule binding activity. Involved in negative regulation of microtubule polymerization and regulation of microtubule nucleation. Colocalizes with mitotic spindle.

Recommended Dilutions

WB 1:500 - 1:2000

Immunogen Information

Gene ID

24139

Swiss Prot

O95834

Immunogen

Recombinant fusion protein containing a sequence corresponding to amino acids 150-415 of human EML2 (NP_036287.1).

Synonyms

ELP70; EMAP2; EMAP-2; EML2

Contact

☎ | 400-999-6126

✉ | cn.market@abclonal.com.cn

🌐 | www.abclonal.com.cn

Product Information

Source

Rabbit

Isotype

IgG

Purification

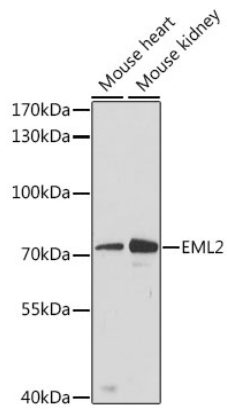
Affinity purification

Storage

Store at -20°C. Avoid freeze / thaw cycles.

Buffer: PBS with 0.01% thimerosal, 50% glycerol, pH7.3.

Validation Data



Western blot analysis of various lysates using EML2 Rabbit pAb (A4581) at 1:3000 dilution.
Secondary antibody: HRP Goat Anti-Rabbit IgG (H+L) (AS014) at 1:10000 dilution.
Lysates/proteins: 25 μ g per lane.
Blocking buffer: 3% nonfat dry milk in TBST.
Detection: ECL Basic Kit (RM00020).
Exposure time: 90s.