

ACE2 Rabbit mAb

Catalog No.: A4612 **Recombinant** **13 Publications**

Basic Information

Observed MW

100kDa/120kDa

Calculated MW

92kDa

Category

Primary antibody

Applications

ELISA,WB,IHC-P,IF/ICC

Cross-Reactivity

Human, Mouse, Rat

CloneNo number

ARC50948

Background

The protein encoded by this gene belongs to the angiotensin-converting enzyme family of dipeptidyl carboxydipeptidases and has considerable homology to human angiotensin 1 converting enzyme. This secreted protein catalyzes the cleavage of angiotensin I into angiotensin 1-9, and angiotensin II into the vasodilator angiotensin 1-7. ACE2 is known to be expressed in various human organs, and its organ- and cell-specific expression suggests that it may play a role in the regulation of cardiovascular and renal function, as well as fertility. In addition, the encoded protein is a functional receptor for the spike glycoprotein of the human coronavirus HCoV-NL63 and the human severe acute respiratory syndrome coronaviruses, SARS-CoV and SARS-CoV-2, the latter is the causative agent of coronavirus disease-2019 (COVID-19). Multiple splice variants have been found for this gene and the dACE2 (or MIRb-ACE2) splice variant has been found to be interferon inducible.

Recommended Dilutions

WB	1:100 - 1:500
IHC-P	1:50 - 1:200
IF/ICC	1:50 - 1:200

Immunogen Information

Gene ID

59272

Swiss Prot

Q9BYF1

Immunogen

Recombinant fusion protein containing a sequence corresponding to amino acids 18-740 of human ACE2 (NP_068576.1).

Synonyms

ACEH; ACE2

Contact

 | 400-999-6126 | cn.market@abclonal.com.cn | www.abclonal.com.cn

Product Information

Source

Rabbit

Isotype

IgG

Purification

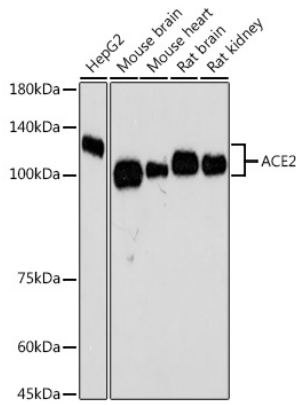
Affinity purification

Storage

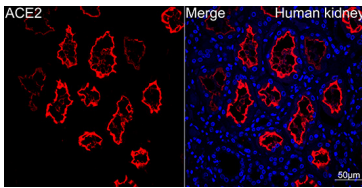
Store at -20°C. Avoid freeze / thaw cycles.

Buffer: PBS with 0.05% proclin300,0.05% BSA,50% glycerol,pH7.3.

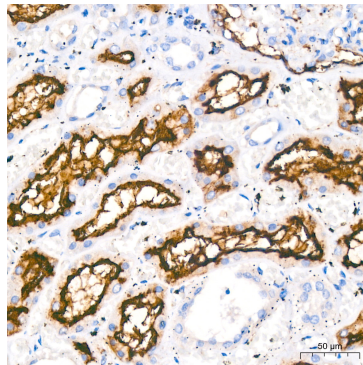
Validation Data



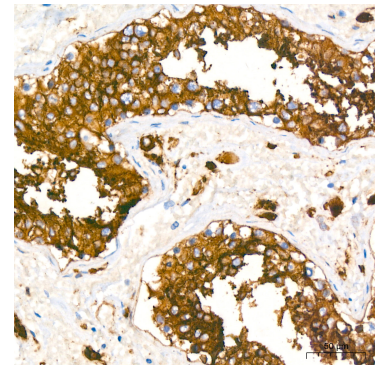
Western blot analysis of various lysates using ACE2 Rabbit mAb (A4612) at 1:500 dilution. Secondary antibody: HRP Goat Anti-Rabbit IgG (H+L) (AS014) at 1:10000 dilution. Lysates/proteins: 25µg per lane. Blocking buffer: 3% nonfat dry milk in TBST. Detection: ECL Basic Kit (RM00020). Exposure time: 180s.



Confocal imaging of Human kidney using ACE2 Rabbit mAb (A4612, dilution 1:100) (Red). DAPI was used for nuclear staining (blue). Objective: 40x.



Immunohistochemistry analysis of paraffin-embedded Human kidney using ACE2 Rabbit mAb (A4612) at dilution of 1:200 (40x lens). Perform high pressure antigen retrieval with 10 mM citrate buffer pH 6.0 before commencing with IHC staining protocol.



Immunohistochemistry analysis of paraffin-embedded Human testis using ACE2 Rabbit mAb (A4612) at dilution of 1:200 (40x lens). Perform high pressure antigen retrieval with 10 mM citrate buffer pH 6.0 before commencing with IHC staining protocol.