

TIMM10 Rabbit pAb

Catalog No.: A4626

1 Publications

Basic Information

Observed MW

12kDa

Calculated MW

10kDa

Category

Primary antibody

Applications

ELISA, WB, IF/ICC

Cross-Reactivity

Human, Mouse, Rat

Background

The mitochondrial protein encoded by this gene belongs to a family of evolutionarily conserved proteins that are organized in heterooligomeric complexes in the mitochondrial intermembrane space. These proteins mediate the import and insertion of hydrophobic membrane proteins into the mitochondrial inner membrane, functioning as intermembrane space chaperones for the highly insoluble carrier proteins.

Recommended Dilutions

WB 1:1000 - 1:5000

IF/ICC 1:50 - 1:200

Immunogen Information

Gene ID

26519

Swiss Prot

P62072

Immunogen

Recombinant fusion protein containing a sequence corresponding to amino acids 1-90 of human TIMM10 (NP_036588.1).

Synonyms

TIM10; TIM10A; TIMM10A; TIMM10

Contact

☎ | 400-999-6126

✉ | cn.market@abclonal.com.cn

🌐 | www.abclonal.com.cn

Product Information

Source

Rabbit

Isotype

IgG

Purification

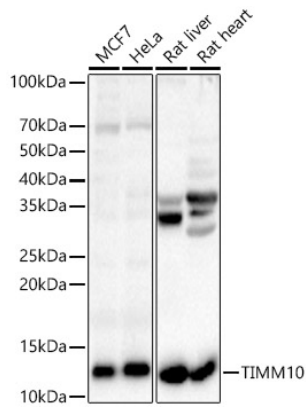
Affinity purification

Storage

Store at -20°C. Avoid freeze / thaw cycles.

Buffer: PBS with 0.02% sodium azide, 50% glycerol, pH 7.3.

Validation Data



Western blot analysis of various lysates, using TIMM10 Rabbit pAb (A4626) at 1:2000 dilution.
Secondary antibody: HRP Goat Anti-Rabbit IgG (H+L) (AS014) at 1:10000 dilution.
Lysates/proteins: 25µg per lane.
Blocking buffer: 3% nonfat dry milk in TBST.
Detection: ECL Basic Kit (RM00020).
Exposure time: 30s.